

Clerk's Report

The Precept

- In 2024-2025 precept was £12,784.36
- Equates to £18.03 per band D household
- Cost per household has risen less than 1% in four years

Major Works

- Purchased car park at the Village Hall from the Borough Council to secure its future (£20,000 grant)
- Bought new gates for the car park (£5,000 grant)
- Renewed the sewer under the car park

Change is Coming

- Elms Park 4115 homes in total
- Half in Swindon Parish
- Say 1.5 adults per unit
- Extra 3000 people in parish
- Home Farm will add say 200 people
- Registered voters might go from 1422 to 7300

Village News

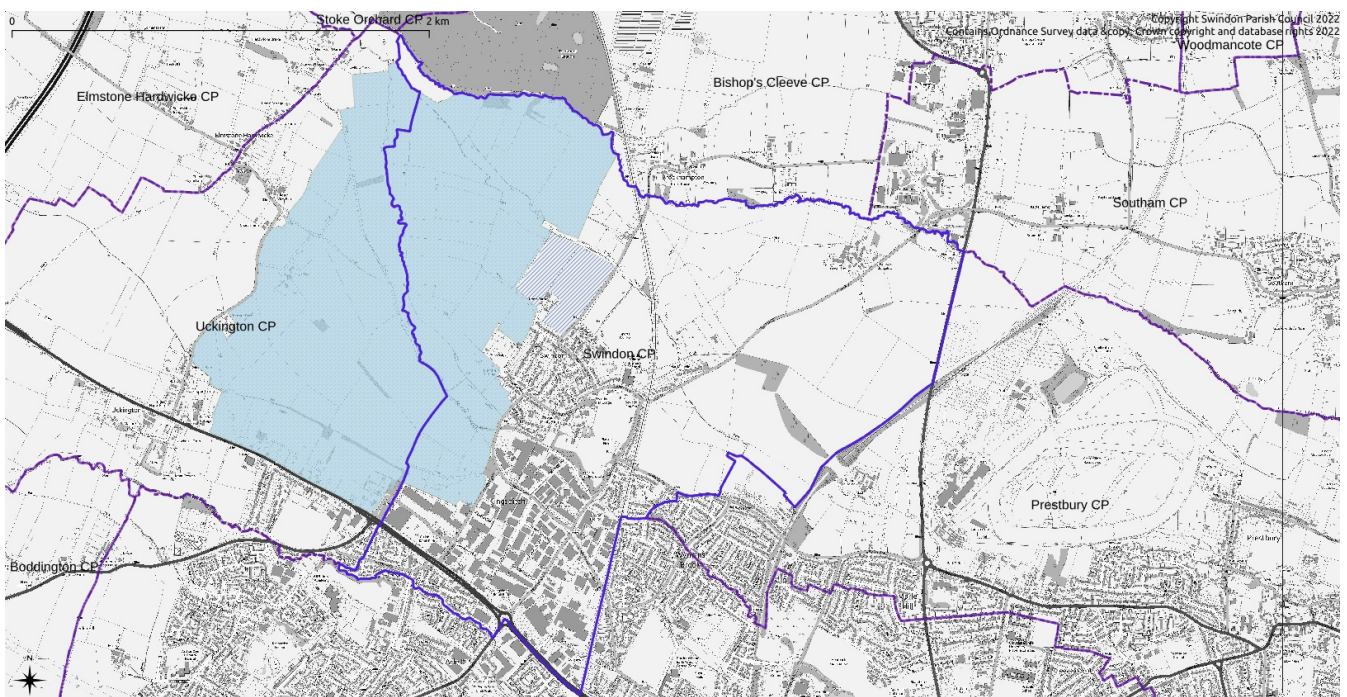
- Village News published 10 issues per year
- Subsidised by the Parish Council
- Remains popular with residents

Community Infrastructure Levy (CIL)

- Developers are required to make payments based on the area of their developments
- 15% goes to Parish Council
- Received over £62,000 for Swindon Farm (part of Elms Park)
- To be used for capital projects only

Character of Parish

- Village area
- Higher density housing south of Tewkesbury Road
- Three retail parks
- Two industrial estates



Vice Chair's Report

In Summary...

Some quite major things have occurred within the parish this year & all the councillors & the clerk have worked hard to try to ensure we are doing our utmost to maintain & improve the parish for now & for future generations. The role of parish councillor is voluntary.

Village Hall Car Park

- Completed purchase of car park
- Worked with the Village Hall Committee & organised new drains to replace damaged drains and replace the gates

Closure of the Churchyard

- The church concluded there was no more space for burials in the churchyard
- Parish Council had to consider whether we would take over maintenance
- Councillors inspected the churchyard
- Unfortunately we decided it was too big a job for the parish council to maintain it with several problematic areas

Elms Park

- Councillors from Swindon, Elmstone Hardwicke & Uckington met with GCC Highways to discuss traffic modelling
- Councillors attended the planning meeting to put our concerns & views across as to what further things could be done to lessen the impact of the development to local residents & businesses

The Police

- Councillors attend meetings with the police, raising issues about dirt bikes & parking
- Work Jointly with other Parish Councils in the area
- PCSOs will attend Parish Council meetings

Manor Road Closure

Several of our councillors met regularly with Persimmon and Gloucestershire Highways to try to reduce impact on locals, including businesses.

Old Mill Way

- Councillor Harcourt & a team planted new trees
- Maintenance work on existing trees completed
- Ceremony to plant memorial trees to recognise the work done by Helen wells & David illife

Parking at School

- Met with school governors to understand the problems the school face with parents parking
- Reviewed the TRO & have written a letter in support of but also to see if possible yellow lines could extend to Seasons to avoid moving problem further up the road

Cycle Way

Councillors attended meeting at racecourse & have suggested things that can be done to reduce the impact of the traffic on residents

Pride in the Area

- Reported graffiti and undertook cleaning
- Organised and led litter picks, removing tens of bags of rubbish