

# Village News

## in Swindon Village

*Your local Newsletter sponsored by the  
Parish Council and delivered by volunteers*

No. 435      June 2017

### June

- |                |           |  |
|----------------|-----------|--|
| Monday         | 5         | Marle Hill W.I. - St. Nicolas' Hall 7.30pm<br>Ged Cassel - Florida and The Everglades    |
| Wednesday      | 7         | Wednesday Club - Village Hall 8.00pm<br>Heather Sutton - Boots Make-Up                   |
| <b>Tuesday</b> | <b>13</b> | <b>Parish Council Meeting - Village Hall<br/>Beginning with Public Session at 7.30pm</b> |
| Wednesday      | 19        | Swindon Village Society - visit to Charingworth Court gardens<br>(details inside)        |
| Sunday         | 25        | Praise in the Park at 3.00pm followed by tea in the Village Hall                         |
| Wednesday      | 28        | Wine Club - Treasure Hunt by car 6.15pm  |

### July

- |                |           |   |
|----------------|-----------|---|
| Saturday       | 1         | St. Lawrence's Midsummer Market - Village Hall 2.30pm   |
| Monday         | 3         | Marle Hill W.I. - St. Nicolas' Hall 7.30pm<br>Eugene & Margaret Schellenberg - The Ifakra Bakery Project  |
| Wednesday      | 5         | Wednesday Club - Village Hall 8.00pm<br>Tore Fauske - Growing up in Norway under the<br>German Occupation |
| <b>Tuesday</b> | <b>11</b> | <b>Parish Council Meeting - Village Hall<br/>Beginning with Public Session at 7.30pm</b>                  |

*(Full minutes of all Parish Council meetings are available on the Parish website [www.swindonparish.org.uk](http://www.swindonparish.org.uk). They are also available on request from the Chairman.)*

The cruisers staged another meeting in Kingsditch Industrial Estate and on the KFC/Homebase car park. The events are advertised on social media and the location is revealed late in the day. This makes them hard to monitor and control. The numbers attending were not as high as expected. To be fair the police maintained a presence for part of the time though their CCTV van was not available. Cheltenham Borough Council Environmental Health officers also attended to monitor noise levels. Apparently most of the action took place in Gloucester where the group took over St. Oswald's retail park and enforced entry by ticket only! This made the public space a "no go" area for the general public.

The Parish Council and your Borough Councillors are not aware of any complaints from the public in relation to this event. Just to repeat, the police will only consider there is a problem if they receive complaints from people. If you think "I am not going to report my concerns because nothing will be done" then nothing WILL be done. On this occasion the event was much lower key than expected (at least for us). However, if you are concerned in the future please report the matter to the police (ring 101 or email [101@gloucestershire.police.uk](mailto:101@gloucestershire.police.uk)) and get an incident number. If you also let the parish council know we can monitor the situation and press for action from the police and Borough Council.

The small boxes hung at regular intervals in the hedge along Manor Road did not draw a huge response (unless two suggestions is a huge number). Sadly neither offering went for the "most humorous answer" award so it must remain unclaimed and go back in the parish vaults. However, my correspondents agreed that the boxes were put out for the purpose of monitoring the dormice population. We still have no idea who is doing the monitoring though it is my suspicion that North Korea may be at the bottom of it. In researching this matter I have found answers to such questions as "How do pheasants impact on dormice during hibernation?", so my time has not been wasted.

We have no more news to report on the JCS or the "Elms Park" development. We note that developers are still pushing to develop the fields between Swindon Lane and Hyde Lane even though this is not a JCS site (and is Green Belt). We'll keep you posted.

News is a bit thin on the ground this month so I'll treat you to some information about our audit. The Parish Council has recently undergone its annual internal audit. Again I am delighted to report that all the money was where it was supposed to be. The auditor did comment on a couple of points regarding our procedures and we will have to address those in the coming year. We also have to submit a return to the external auditor. The external auditor is a firm of accountants who won the contract to perform

the external audit of all the parish councils in the south-west. Being accountants they are paid a lot of money but they don't look in great detail at what we are doing; they rely on the internal auditor's report. No justice.

This regime is changing. As we are a small council we won't be subject to external audit in the future. We are required to publish lots of information on our web site. The theory is that public scrutiny can take the place of a formal audit. We will still have an internal audit and be required to publish the report. Thereafter it will be up to the public to take an interest and to understand what is being done with their money. I would complain that apathy might be a problem here but I can't be bothered!

BT have been consulting on the removal of telephone boxes. With the inexorable rise of mobile phone use the humble telephone box has become an expensive white elephant in many cases. You will notice BT removing the box in Riveland's Road. The box was used to make only 5 calls in the last year. Had it been a traditional red telephone box we could have adopted it for one pound and turned it into something else. Some communities use them as a tiny library or a home for a defibrillator. I was thinking it could have become an office for the parish clerk.

**Shaun Cullimore**

Clerk to Swindon Parish Council

"If you have concerns about anti-social behaviour do not hesitate to contact the police.

**Ring 101 or email [101@gloucestershire.police.uk](mailto:101@gloucestershire.police.uk)**

Get an incident number and let the parish council know about it.  
If the police are not made aware of a problem THERE ISN'T A PROBLEM".



## News from our Village Agent

It's always interesting to be on the receiving end of customer care isn't it? You can then reflect on how you would like to be treated, what is done well and what is sometimes not done so well.

In the last few weeks it has been my turn to be the person needing assistance – I have requested help from people I haven't known, to fill in forms and to support me. It has made me appreciate how scary it can be to pick up that 'phone for the first time and ask for help. But I have been so touched by the kindness of people; the gentle, non-judgemental support and the patience of people that I have never met. I hope that anyone who contacts a Village Agent – or any agency designed to help them - receives the same treatment because we all deserve to be treated this way.

If you are struggling with anything – whatever it may be, then please don't struggle alone. That old saying of a trouble shared is a trouble halved is true. I may not have all the answers but I will do my best to find a person or another agency that may be able to help you – whatever the problem is.

I do only work part time but please leave your name and a telephone number and I will get back to you when I pick up your message. And I will try to be as kind to you as people have been to me.

In the mean time.....

*"If you want to lift yourself up, lift up someone else" -*

Booker T Washington

**Liz**

Village Agent 07810 056770

[lheckford@villageagent.grcc.org.uk](mailto:lheckford@villageagent.grcc.org.uk)

**Advertise your business in the Village News**

### **Monthly rates**

Whole page £36    Half page £18    Quarter page £9

**Contact the Editors**

## Services and events in June

|                  |          |  |  |
|------------------|----------|--|--|
| 3 <sup>rd</sup>  | Saturday | 3.30pm   | Wedding  |
| 4 <sup>th</sup>  | Sunday   | 10.30am<br>6.30pm                              | Together @ Ten Thirty for Pentecost<br>Holy Communion with the Airborne Forces Association |
| 6 <sup>th</sup>  | Tuesday  | 10.30am<br>7.30pm                              | Chatterbox coffee drop in<br>Tuesday Group   |
| 10 <sup>th</sup> | Saturday | 1.00pm   | Wedding  |
| 11 <sup>th</sup> | Sunday   | <i>Trinity Sunday</i><br>9.15am<br>6.30pm      | Holy Communion (BCP)<br>Evensong   |
| 13 <sup>th</sup> | Tuesday  | 10.30am<br>7.00pm                              | Chatterbox<br>Holy Communion followed by Tuesday Group                                     |
| 18 <sup>th</sup> | Sunday   | <i>Trinity 1</i><br>9.15am<br>2.30pm<br>6.30pm | Holy Communion<br>Baptism<br>Evensong  |
| 19 <sup>th</sup> | Monday   | 7.00pm   | PCC  |
| 20 <sup>th</sup> | Tuesday  | 10.30am<br>7.30pm                              | Chatterbox<br>Tuesday Group  |
| 25 <sup>th</sup> | Sunday   | <i>Trinity 2</i><br>9.15am<br>2.30pm<br>3.00pm | Holy Communion<br>Baptism<br>Praise in the Park  |
| 27 <sup>th</sup> | Tuesday  | 10.30am<br>7.30pm                              | Chatterbox<br>Tuesday group  |

## Services and events in July

|                 |          |                   |   |
|-----------------|----------|-------------------|---|
| 1 <sup>st</sup> | Saturday | 2.30pm            | Midsummer Market in the Village Hall    |
| 2 <sup>nd</sup> | Sunday   | 10.30am<br>6.30pm | Together @ Ten Thirty<br>Holy Communion |

## From the registers



### Marriage

*We celebrated the marriage of*  
Lee Sharpe and Amy Averiss

20th May

## Enquiries about baptisms or weddings

If you would like to enquire about baptism (also called christening) or would like to book a wedding in St Lawrence church, please visit the Team Surgery at St. Nicolas' Church, Swindon Lane on any Saturday morning between 10.30am and 11.00am. (Enter through the main door and turn right.)

If this is not possible contact the Team Office, which is open Monday to Friday from 9am until 12 noon. The office is based at St Nicolas' Church in Swindon Lane. Contact the Office on **244373** or **admin@northchelt.org.uk**

**You can contact me, the Revd Liz Palin (Team Vicar) on 575547, [liz.palin@northchelt.org.uk](mailto:liz.palin@northchelt.org.uk).**

## St. Lawrence's Church Restoration Appeal

A date for your diary...

**Beetle Drive and Hot Dogs**  
**Saturday 29th July at 6.30pm**  
**in the Village Hall**

Details in next month's Village News

Fake news became quite an issue in the US presidential elections and last year's referendum on Europe. Facebook have now issued guidelines on how to spot fake news.

In the run-up to the general election it's good to be mindful of the influence of news stories in our lives.

The Easter message is one of Good News, but it was (and still is) also seen as fake news. Jesus back from the dead? Even one of Jesus' close friends, Thomas, didn't believe it until he saw for himself. He encountered Christ and realised the news he thought was fake was indeed true.

This month we celebrate Pentecost (or Whit Sunday as it used to be known). We celebrate the coming of the Holy Spirit on the disciples after Jesus had returned to heaven. It's sometimes called the birthday of the church - timid people who weren't sure what to do next suddenly found courage and words to share the good news of Christ. The rest, as they say, is history!

So as we celebrate the birthday of the church we give thanks for the good news - that God loves each and every one of us and we can encounter Christ every day if we are open to it.

**Revd Liz**

### **Praise in the Park tea**

#### **Request for cakes**

Details of our annual "Praise in the Park service are elsewhere in this magazine.

We would be grateful for donations of cakes to serve at the tea afterwards. If you can help please contact **Mary Halliwell**, phone **692423**.

## Finance, fundraising, and restoration

I mentioned last month that we had received the news that the tower roof is in need of repair. It will cost a considerable amount of money, so now seems a good time to talk about how your local church is financed.

As with all of life, the church has running costs which it has to meet. Cost of clergy, of administration, heating, lighting, keeping up to date with the latest health and safety regulations, maintaining the churchyard, the supplies needed for our regular services, and day-to-day minor repairs, as well as financing activities for the local community.

These **general** costs are covered (just about!) by regular giving from members of the congregation, a portion of fees from weddings and funerals, legacies (that are not designated for a particular project or activity) and the annual fete. Money from these activities goes to the **general fund to cover general costs**.

Every so often something comes along that needs major funding, usually to preserve and **restore** parts of the church – a listed building, which is part of the heritage of the community and the country. We have a unique heritage in that our tower is only one of two of its kind in the country. **We have a responsibility to preserve and restore the church for generations to come.** Neither the Diocese nor the national Church of England have money to assist with this so it is down to the local congregation to fund projects – sometimes through applying for grants along with other fundraising activities, such as the Christmas Tree Festival and the quiz and supper evening, specifically for the **restoration fund**.

This year we are facing a challenge. Due to a lack of willing volunteers we are not having a church fete. Instead we are having a summer sale – of plants, cakes, books etc. - with teas. Whilst we are sure that this will be a wonderful occasion, it will not generate the amount of funds the fete did. So our **general fund** will be significantly depleted.

On top of that we will need to raise a substantial amount of money to **restore** the tower roof.

I will be meeting with Karen Evans shortly to talk about our fundraising strategy. If you have any skills or experience that you feel would be helpful to us, please do get in touch with either Karen (phone 241678), our churchwardens or myself (contact details on the back cover).

In the meantime, I'm off to research abseiling down the tower.....

**Revd Liz**



## A Very Special Wedding



Weddings take a lot of planning and organising. Well actually it's often the reception and all the peripherals that take the organising.

Amy and Lee had given themselves plenty of time to prepare for their big day. Originally planned for this summer, it was postponed to next year when Amy was diagnosed with cancer. She wanted to get her treatment out of the way – after all, every bride wants to look beautiful on her wedding day.

But then her fiancé Lee received the devastating news that he too had cancer, but that his was untreatable, and he probably had weeks to live. Both Amy and Lee knew that what mattered most was to exchange their wedding vows in church before it was too late.

As you will know there is quite a legal process to go through in order to be married anywhere. However, in extreme circumstances a common licence can be issued which allows a couple to marry if there hasn't been time to read banns.

The amazing legal people in the Diocese of Gloucester were able to arrange this special licence on Tuesday 16th May, and Lee and Amy were married on Saturday 20th May. The church was full to overflowing; friends and family rallied round and made sure there was a dress, bouquets, cars, cake and photographer.

The church did its bit by decorating the church with flowers in the chosen colour theme of yellow and white, and Kate in our office produced orders of service decorated with pictures of yellow roses.

It was a very moving and happy occasion, and the church family at St Lawrence were thrilled that we were able to fulfil Amy's and Lee's dreams and create wonderful memories for them.

We are holding them in our prayers, and hope for a wonderful married life for them, however long that may be.

**Revd Liz**



**St. Lawrence, Swindon Village**  
**with Cheltenham St. Peter**

**'PRAISE IN THE PARK'**

ON

**SUNDAY 25th June 2017**

AT

**3.00 PM**

AT

**Swindon Village Playing Fields**

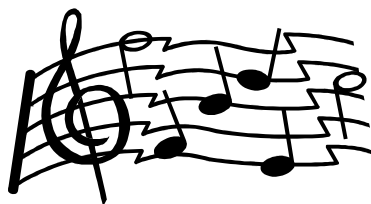
WITH THE

**SALVATION ARMY BAND**

**FOLLOWED BY TEA IN THE VILLAGE HALL**

**COME AND ENJOY  
AN AFTERNOON OF FRIENDSHIP AND PRAISE**

**ALL WELCOME**  
**(Bring a friend & a chair!)**



**(In the Village Hall if wet)**



St. Lawrence's Church

# Midsummer Market

Saturday 1st July  
at 2.30pm  
in the Village Hall

Plants      Books      Craft  
Cakes & Bakes  
As Good As New  
Raffle  
Cream Teas

This event replaces this year's fete and funds raised will be used for the day-to-day running costs of St. Lawrence's Church.

If you can help on the day or if you have goods to donate for any of the stalls please contact  
**Karen Evans, phone 241678.**

We welcomed Rosemary Prosser once again to our club and this time her talk was “Hot Wheels – Cold Meals”. A very interesting and amusing talk about various aspects of her busy life. Rosemary was brought up in the Vale of Evesham, became a policewoman and married a dairy farmer. After ten years in the Police Force and pregnant with her first child, she retired.

They later moved to Devon, again farming, and Rosemary started Bed and Breakfast (talk – One egg or two). Eventually they moved back to Worcestershire upon her husband's retirement.

Rosemary started as a W.I. speaker in 2005 and has given 1200 talks across Gloucestershire, Worcestershire, Warwickshire and Herefordshire. A very busy lady, hence “Hot Wheels”.

Another string to her bow is Race Day Tours at Cheltenham and Worcester race courses. Rosemary also has a great interest in making people aware of Lyme Disease and trying to prevent it. The condition can be caused by Tick bites and she advises people to be aware of this in gardens, forested areas and the hillsides and to seek medical advice if aware of a bite.

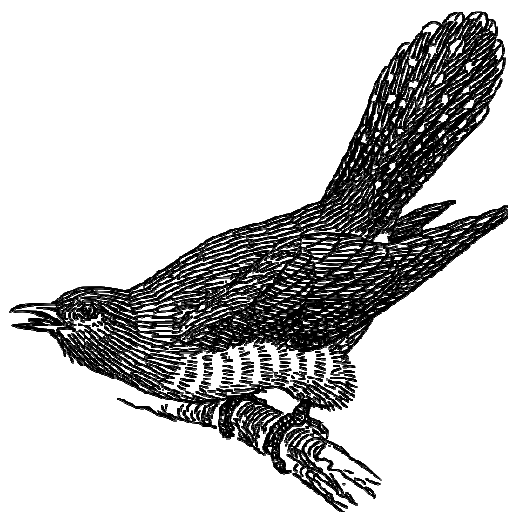
Our trip to Bowood House is on July 12th, leaving the Village Hall at 10 am. The cost is £22 per person including admission and coach fare. Payment is due at our next meeting in June please.

At our next meeting on 7<sup>th</sup> June we will be welcoming Heather Sutton from Boots No 7 make-up. We will also have a cake, plant and book stall at this meeting. Please do come along and support us as our coffee morning has been cancelled for this year. Visitors are welcome at £3 to include supper and will be made very welcome. Looking forward to seeing you then.

**Shirley Ruxton**

### **The Cuckoo Returns**

After an absence of three years a cuckoo has been heard again in the Manor Road and Stantons Drive area.





# Save The Countryside



Around 100 people joined our 10th celebration walk in beautiful sunshine.

Thanks, everyone, for your support.

We all had a lovely day.

**Helen Wells**



There was much better weather for the bird walk this year so it saw a few more of us strolling through the village and along Dog Bark Lane. We saw a fairly standard haul of tweets: Starling, Rook, Blackbird, Magpie, Wood Pigeon, Blackheaded Gull, Jay, Long Tailed Tit, Goldfinch, Blue Tit, Chiff Chaff, Wren, Raven, Robin, Chaffinch, Sky Lark, Great Tit, Common Gull, Buzzard, Mallard. Well we didn't actually see the Mallard but we heard him quacking in the nearby pond while we were taking tea at Swindon Hall after the walk so thought we would throw him in to make the round twenty. Also flying by were Speckled Wood and Orange Tip butterflies and a North American Harvard trainer from World War 2. And, of course, we also received some very fine information on some of the plants in the lane from John who is always a fountain of knowledge on such things. I'm better on aircraft.

For those newly arrived in the village I would remind you that some years ago we produced seven books of village history known as The Swindon Village Collection. They are all still available to those who wish to buy them. They range from £5 to £8, I think, and if you are interested contact Eileen Allen or Hazel Luxton. If you don't know how to contact Eileen or Hazel, give me a call on 521723. To buy the lot at once is quite expensive but they are sold individually and you may find some of more direct interest than others. If you would like to take a look at them without buying they are available in the Local History Library which is behind the Main Library in town.

June sees our annual garden visit. We have decided on a private visit to Charingworth Court which is a house and garden in Winchcombe. We are going on the evening of Wednesday 21<sup>st</sup> June. Now there is a charge of £10 per person for this visit but this includes a glass of wine, tea, coffee, cake and nibbles. The Village Society will subsidise this visit for members. Just what the price will come down to depends on numbers on the night but it may well be in the order of two pounds off. Non-members will be welcome to join us for the full £10. Because we need to warn the owners of numbers in advance we are going to operate a booking service via me. So if you want to come call 521723 and book or e-mail 'barry\_simon@hotmail.com'. If I am not in leave a message on the answer phone. Last booking by 9am on Monday 19<sup>th</sup> May. If you get a last minute crisis we won't hold you to the booking. If you are not a member please leave your telephone number. We will meet on the night at 7pm in the Village Hall car park to amalgamate cars. So if you don't have your own transport, do come and we can almost certainly arrange something. If you do have a car, bring it along but we may manage a lift for you anyway – I think parking is limited.

Remember on the night that all due respect is due to Winchcombe – one thousand years ago they were our county town when Swindon Village was a part of the short lived County of Winchcombeshire.

Don't forget that we are always happy to have new members. Single membership is £5 for the year and family membership is £10. Come to a meeting, visitors are always welcome, or if you come to the door of 3, Swindon Hall with money in hand there is every chance of a cup of tea.

**Barry Simon**



## Swindon Village Winemakers

Back in March we had an interesting talk by Peter Berry called "To The Roof Of The World (INDIA)". Mr Berry is a train fanatic and gave a talk on 100-year old steam trains in the Himalayan foothills, as well as the wonderful mountains, Tibetan monasteries and not forgetting the snake charmer.

The April meeting was a wine tasting evening given by Tony Jilbert and Jim Ruxton. This was a most entertaining few hours; at times it was more like The Two Ronnies. All the wines came from South Africa and included Chardonnay, Merlot and Shiraz to name just a few; there were six wines all together and the members would taste them and try to guess the country and the price of each bottle which cost from £5.25 to £9.00.

The May meeting will be our annual B.B.Q. with visitors from other wine clubs.

The June meeting will be a car Treasure Hunt.

**Roy Harper**

### *The Swindon Village Society*

An evening visit to

### *Charingworth Court Cotswolds Garden*

Winchcombe

An artistic country garden with Japanese influences

### **Wednesday 21st June**

Meet at the Village Hall car park at 7.00pm  
to amalgamate cars

### **Admission £10**, including refreshments

(Small subsidy for Society members)

Non-members welcome

### **Booking essential via Barry Simon**

**Phone 521723 or**

**Email [barry\\_simon@hotmail.com](mailto:barry_simon@hotmail.com)**



We had a very busy evening at our meeting in May. Peter Bryant, the recently retired County Secretary, opened the evening with an illustrated talk about his career. Born in Bristol, he joined the RAF as a dog handler, serving in Cyprus during the troubles there and then in Northern Ireland, was a body guard in Belize – where he also DJ'd on the services radio, took a commission and was stationed at RAF Valley, Anglesey, Stanmore and then Innsworth. After serving for 26 years in the RAF he retired and took up a post as Secretary of the Royal Pigeon Racing Association for 10 years – to continue his career in the 'Royal flying' world! After a short time at the National Trust, doing maternity leave cover, he spotted the advert for a Secretary at the Gloucestershire Federation of WIs, and applied as a joke. He got the job! So far, the only male WI County Secretary in the country. Peter spent over six years in the post and was a very efficient and hard worker with entertainment thrown in - he says that dealing with the pigeons and their owners was more stressful! He is much missed at WI House, though Lindsay, the new Secretary, is quickly finding her feet.

Next on the agenda were the discussions and voting on the two Resolutions to be debated at the National Annual Meeting in Liverpool in June. The subjects were on Plastic Soup (the accumulation of plastic residue, especially in the sea) and Loneliness.

The holiday in Lincolnshire was much enjoyed by a number of members, despite the weather being a bit chilly and wet. Visits to Burghley House, Grantham, Southwell with its Workhouse and beautiful Minster, Lincoln – where Sue and I were pelted with hailstones as we walked round the Castle walls - and Newark where we went on a boat trip on the River Trent. On the way home we called in on the late Geoff Hamilton's gardens at Barnsdale, that are now run by his son Nick. There are 37 separate gardens which were developed for his Gardeners' World programmes. As usual on these kind of outings, the coaches were full of plants and shrubs, to be found new homes in Gloucestershire!

The May activities included a tea afternoon at Gloria's where we enjoyed her beautiful garden (though it was a bit damp and too chilly to sit outside), a skittles evening, Craft and Book Club meetings, tea at Eileen's and a meal at Moran's. Dame Janet Trotter gave a very interesting and inspiring talk at the Cleeve Hill Group Meeting. We also took part in a Shibori beading day, a morning dying a silk infinity scarf and a County walk. After a slight hitch in the County Skittles Tournament we have been awarded a bye, and so go into the next round for the Trophy, where we are due to play Benhall WI.

The June programme is looking very busy. Several of us are off to Liverpool to the National Annual Meeting; I am stewarding. Then we have the Three Counties Show at Malvern; there we have teams of members going to help with the catering, sales and craft demonstrating over the three days.

We have a change to the June programme. We now have Ged Cassel giving a talk



on 'Florida and the Everglades'. Visitors are always made welcome if you would like to join us for the evening. We shall meet at St. Nicolas' Hall, Swindon Lane at 7.30pm on Monday 3<sup>rd</sup> June.

May I take this opportunity to congratulate Sue Davies, our President, on completing her WI Advisor training, for which she is now qualified.

**Sara Jefferies**

## Art & Crafts Club

### Annual Exhibition

A very successful exhibition this year with plenty of visitors and a good atmosphere. We raised over £100 on the raffle, made over £50 selling delicious home-made cakes and Anne sold one of her pictures, as did Pam.

Gill won best picture with Matt coming second. A great display of all Craft work and a couple of things sold. Thanks to everyone who supported us; we all felt it was one of our most successful exhibitions.



We start again on 7th September. If anyone is interested in joining please telephone me on 01242 582366.

Have a good summer, (let's hope the sun shines!!!)

**Helen Dicks**

*Gill Groves with her winning picture and the trophy*

## *Brite Interiors*

Quality Interior Painting

General maintenance

Fencing

All work considered

Local & Trustworthy

References and Photo Portfolio

Competitive daily rates

**DISCOUNTS FOR SENIORS**

Sole Trader

**Martin Gautrey**

Mobile:- 07980 032 034

Home:- 01242 232570



## **SJB Carpentry & Joinery**

All Aspects of Carpentry and Home  
Maintenance

Handmade Furniture

Bespoke Storage Solutions

Stairs & Bannisters

Doors & Windows

Flooring, Skirtings & Architraves

Floor & Wall Tiling

Gates, Decking & Pergolas

Contact Stu for a free quotation on

Tel: 07729912530

Email: [sjb\\_carpentry@yahoo.co.uk](mailto:sjb_carpentry@yahoo.co.uk)

Website: [www.sjbcarpentryjoinery.co.uk](http://www.sjbcarpentryjoinery.co.uk)



## **ALEXANDER BURN FUNERAL DIRECTORS**

**Alexander Burn is an independent family business with  
four offices covering the Cheltenham and Tewkesbury area.**

**COURTEOUS, EFFICIENT AND RESPECTFUL**

**24 hour personal service | Private chapels of rest**

**HM Coroner and NHS Funeral Director for Gloucestershire**

**[www.alexanderburn.com](http://www.alexanderburn.com)**

Bishops Cleeve  
22 Church Road  
01242 673300

Cheltenham  
436 High Street  
01242 245350

Winchcombe  
11 North Street  
01242 604888

Tewkesbury  
23-24 High Street  
01684 276200

## VILLAGE ORGANISATIONS

|                                |                                |  |
|--------------------------------|--------------------------------|--|
| Village & Community Agent      | Liz Heckford                   | lheckford@villageagent.grcc.org.uk<br>07810 056770 |
| Footpaths                      | John Heathcott                 | 527753   |
| Acting Scout Leader & GSL      | Stephen Smith (Sos)            | 693107   |
| Cub Scout Leader               | Rachel Smith (Chil)            | 693107   |
| Beaver Leader                  | Hugh Stanford                  | svbeavers@gmail.com<br>706020                      |
| Rainbow Guider                 | Jackie Bailey                  | 07871 169308                                       |
| Village Hall Booking Secretary | Sandy Thornton                 | 232045   |
| Village Hall Secretary         | Rose D’Gama                    | 574964   |
| Wednesday Club                 | Pauline Wright                 | 693112   |
| Play Group                     | (Playgroup hours)              | 690479   |
| Winemakers’ Secretary          | Roy Harper                     | 662861   |
| School Headteacher             | Jonathan Dyer                  | 690016   |
| Friends of the School          | Sarah Vallender<br>Nic Jackson | chairfosvps@gmail.com                              |
| Art & Crafts Club              | Adrian Skilling                | 690928<br>adrian.skilling@gmail.com                |
| Swindon Village Society        | Barry Simon                    | 521723   |
| Mary Godwin Under 5s           | (Playgroup hours)              | 263746   |
| Marle Hill W.I.                | Sara Jefferies                 | 692500   |
| St. Stephen’s Cricket Club     | Tony Jilbert                   | 693639   |
| Echo Correspondent             |                                |  |
| Save The Countryside           | Helen Wells                    | 07770 986078                                       |

Please inform the editors of any changes to the contact details for village organisations.

Deadline for the next issue of the Village News is the 16th of this month.  
Please send contributions to the editors:  
David Iliffe at 16 Stantons Drive or Karen Evans at 5 Manor Road  
or e-mail [village-news@swindonparish.org.uk](mailto:village-news@swindonparish.org.uk)

### SWINDON PARISH COUNCIL

|                                |                        |   |
|--------------------------------|------------------------|---|
| Chairman                       | Cllr. Peter Allen      | 692933  |
| Vice Chairman                  | Cllr. Glenn Simpson    | 692845  |
|                                | Cllr. John Conmee      | 572060  |
|                                | Cllr. Stuart Deakin    | 230009  |
|                                | Cllr. Frances Hunter   | 692845  |
|                                | Cllr. David Iliffe JP  | 526323  |
|                                | Cllr. Mrs. Helen Wells | 220875 or 07770 986078                            |
| Clerk to the Council           | Mr Shaun Cullimore     | 07833 089435<br>parish.clerk@swindonparish.org.uk |
| Cheltenham Borough Councillors | Cllr. Flo Clucas       | 255844  |
|                                | Cllr. Bernard Fisher   | 07523 421012                                      |
| County Councillor              | Cllr. Bernard Fisher   | 07523 421012                                      |
| Allotments Manager             | Ian Brown              | 528683  |

Swindon Parish and Community Website: [www.swindonparish.org.uk](http://www.swindonparish.org.uk)

### ST. LAWRENCE CHURCH

Part of the North Cheltenham Team Ministry

|   |                      |                                       |
|---|----------------------|---------------------------------------|
| Team Rector   | Revd. Nick Bromfield | nick.bromfield@northchelt.org.uk      |
| Team Vicar  | Revd. Liz Palin      | 575547<br>liz.palin@northchelt.org.uk |
| Reader  | Ralph Griffin        | 510533                                |
| Churchwardens   | Tony Jilbert         | 693639                                |
|   | May Shurmer          | 241033                                |
| Tower Captain   | Hugh Evans           | 241678                                |
| Organist  | John Collins         | 511950                                |
| North Cheltenham Team Ministry Office                     |                      | 244373                                |
| St. Nicolas' Church, Swindon Lane,<br>Cheltenham GL50 4PA |                      | admin@northchelt.org.uk               |

The office is open on Monday to Friday 9am to 12 noon. Outside these hours please leave a message on the answer phone.

The contents of this newsletter do not necessarily reflect the view of the Editors or the Parish Council