

Village News

in Swindon Village

*Your local Newsletter sponsored by the
Parish Council and delivered by volunteers*

No. 449 November 2018

November

- | | | |
|-----------|----|--|
| Monday | 5 | Marle Hill W.I. - St. Nicolas' Hall 7.30pm - Annual Meeting |
| Wednesday | 7 | Wednesday Club - Village Hall 8.00pm
Derek Thorpe - Guide Dogs (Jasper) |
| Sunday | 11 | Remembrance Service at the War memorial - 1045am |
| Tuesday | 13 | Parish Council Meeting - Village Hall
Beginning with Public Session at 7.30pm |
| Wednesday | 14 | Public Meeting about the future of the Village Hall
7.00pm in the Village Hall (see Page 5 for details) |
| Wednesday | 21 | Swindon Village Society - Village Hall 7.30pm
Norman Baker - Some Prestbury History |

December

- | | | |
|-----------|-----|--|
| Saturday | 1 & | Christmas Tree Festival |
| & Sunday | 2 | St. Lawrence's Church 11am - 5pm |
| Monday | 3 | Marle Hill W.I. - St. Nicolas' Hall 7.30pm
Ukulele Band |
| Wednesday | 5 | Wednesday Club - Christmas Supper & Music (Members only) |
| Tuesday | 11 | Parish Council Meeting - Village Hall
Beginning with Public Session at 7.30pm |

(Full minutes of all Parish Council meetings are available on the Parish website www.swindonparish.org.uk. They are also available on request from the Chairman.)

The Council is in the process of producing an emergency planning document. This will identify key personnel, contact information, meeting places, etc. We hope to produce a plan that will line up with the plans of the County Council, the Borough Council and our neighbouring parishes. It always seems crazy to put work into something that you hope will never be needed. It is easy to say "It will never happen" but then we didn't expect the floods of 2007.

Last time I prattled on about how a defibrillator is a piece of equipment that you hope will never be needed. Apparently lives are saved more often than you would think. The Council has now agreed to purchase one to be installed on the outside wall of the village hall. I have had to do quite a bit of research into the world of defibrillators and could now talk an insomniac to sleep on the topic. This is another example of how, as a parish clerk, I have to become acquainted with some very diverse topics. I thought I had a head full of useless information before, but now...

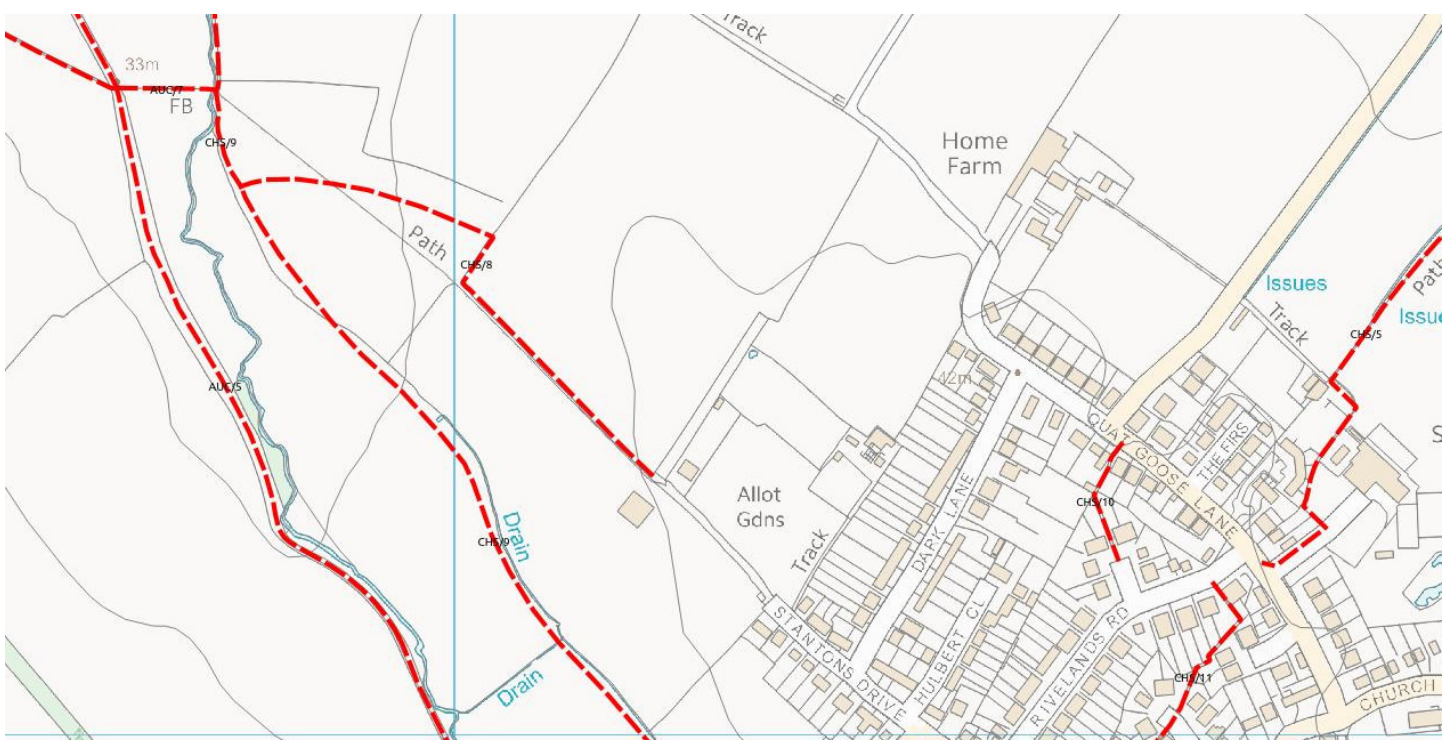
There has been controversy surrounding the ploughing of the fields adjacent to Manor Road and Stantons Drive. A number of residents have complained that the paths are being made impassable. On 15th October John, our footpath officer, and I walked the fields (in the rain I might add). The law states that footpaths along the edges of fields should not be ploughed and that footpaths crossing fields can be ploughed but should be restored to a walkable state within fourteen days. The ploughing appeared to be a work in progress at the time we walked the paths but the ploughing had certainly gone right up to the hedge in places. Whether the footpaths that cross the fields will be restored, only time will tell.

I raised the matter with the farmer. He made it very clear to me that he has issues with walkers. Whilst the walkers see the farmers as a problem I can also see the other side of the coin. Dogs are allowed to roam freely and some owners do not clear up after them or, if they do, the bag is then thrown in a hedge or (or as we witnessed ourselves) hung on a gatepost to become someone else's problem. One lady exercises six dogs at a time. I suggest it would be impossible to give appropriate attention to what the animals are doing. I too walk the fields. I like to think that we dog walkers

are generally a considerate bunch. However, though they may still be a minority there is plenty of evidence to suggest that many are not. We are right to ask that the law of access be enforced regarding footpaths. By the same token, in exercising our rights as users of the paths we must act lawfully and responsibly and respect the farmland and the farmer's rights.

We have referred the matter of the footpaths to the County Council and they have said that they will investigate. To be clear, the parish council has no powers to enforce the law. Our role is to engage with the County Council as the body responsible for public rights of way. I still hope that matters can be resolved amicably.

An interesting point that came out of my investigation is the uncertainty regarding the routing of some paths. The County Council hold definitive paper maps of the routes of footpaths. Whilst they also have online digital maps it is the paper that rules the day. I'm not sure how readable it will be but the digital map extract below shows some of our local footpaths. The path from the end of Stantons Drive (labelled CHS/8) is a very peculiar shape. People tend to walk straight from the end of Stantons Drive across to the corner of the field. This appears to make sense and John, our excellent footpaths officer, has a map from forty years ago that shows the path as a straight line. However, a visit to the map room of the County Council reveals that the footpath is as depicted below on the definitive map. The path follows hedgerows that have long since disappeared.



From footpaths to highways. We had planned to meet with a representative of the County Council to discuss traffic management within the parish. Their representative avoided contributing to local traffic congestion by forgetting to come to the meeting! This is one of the top items on our “hit list” at the moment. We will rearrange the meeting and use it as an opportunity to make constructive suggestions about how some of the traffic problems we see every day might be eased.

The other major item of business on our radar at the moment is the management of the village hall. You will know (because I’ve told you!) that we need volunteers to step forward. We need people to serve on the management committee but, more importantly, we need people who will lend a hand actually getting things done. We held a meeting with representatives of the various groups using the hall and will now be holding a public meeting to tell people what the situation is and what needs to be done to make the hall a vibrant focus for the community again. The details of the meeting are elsewhere in this issue (spoiler alert – the date is 14th November). Please come along, and tell your friends and neighbours as well.

I promised another litter pick. With all that has been going on I simply haven’t had enough time to organise one. My apologies. By the time of the next one I am hoping to have hi-viz vests for you. They will have “SWINDON PARISH COUNCIL” on the back to stop you stealing them as souvenirs!

The village quiz was a success yet again (at least if you count coming third as success). Our undoing this time was a round on children’s TV programmes. We were old enough to remember Bill and Ben but anything more recent had us stumped. For next year we will learn the colours of each of the Teletubbies but, of course, it won’t come up again.

Shaun Cullimore

Clerk to Swindon Parish Council
www.swindonparish.org

Important! Please read this notice!

Save Swindon Village Hall

Important Meeting for all members of the public

7pm

Wednesday November 14th

Swindon Village Hall, Church Road

GL51 9QP

Swindon Village Hall **will close in January 2019** unless
a team of enthusiastic new volunteers can be found
to form a sociable, fun and active management committee.

At the meeting you will learn about:

The varied roles / skills required

Time commitment

How the new committee will work

Services and Events in November

4	Sunday	10.30am 6.30pm	Together @ Ten Thirty Holy Communion
6	Tuesday	10.30am - 12noon	Chatterbox Coffee Drop-In
11	Sunday	9.15am 10.45am 6.30pm	Holy Communion (BCP) Act of Remembrance at the War Memorial Evensong
13	Tuesday	10.30am - 12noon 7.00pm	Chatterbox Coffee Drop-In Holy Communion
18	Sunday	10.30am 6.30pm	Together @ The Table Evensong
20	Tuesday	10.30am - 12noon	Chatterbox Coffee Drop-In
25	Sunday	9.15am 6.30pm	Holy Communion Evensong
27	Tuesday	10.30am - 12noon	Chatterbox Coffee Drop-In

Services and Events in December

1 & 2	Saturday & Sunday	11.00am - 5.00pm	Christmas Tree Festival
2	Sunday	10.30am 6.30pm	Together @ Ten Thirty Holy Communion

From the registers



Baptisms

We welcomed in to the family of the church

Roxanne Elizabeth Thomson 7th October



Marriages

We celebrated the marriage of

Cameron Harper & Chloe Beaver 22nd September



Burial of ashes

We gave thanks for the life of

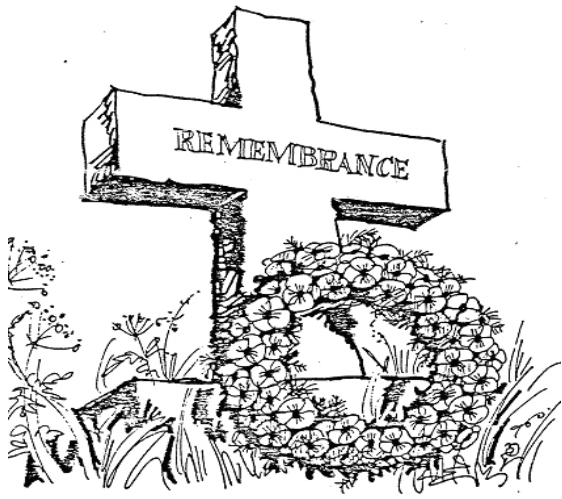
Malcolm Smith 29th September

Enquiries about baptisms or weddings

If you would like to enquire about baptism (also called christening) or would like to book a wedding in St Lawrence church, please visit the Team Surgery at St. Nicolas' Church, Swindon Lane on any Saturday morning between 10.30am and 11.00am. (Enter through the main door and turn right.)

If this is not possible contact the Team Office, which is open Monday to Friday from 9am until 12 noon. The office is based at St Nicolas' Church in Swindon Lane. Contact the Office on **244373** or **admin@northchelt.org.uk**

You can contact Rev. George Davis (Team Vicar) by email fr.georgedavis@hotmail.com or via the office.



As we enter once again into our penitential season, we are urged to remember and to offer thanksgiving for past lives. Whether we dwell upon lives which have directly influenced our own or whether we are asked to respect the memories of lives which in one way or another have governed how human life has been given a particular kind of freedom, it is a time where, more generally, life is reflected upon more deeply and significantly.

Sadly, there is no escaping the fact that in thinking about life in this context there exists an acknowledgement of our human frailty. We will all die one day, and as factual as this may be, we naturally find it a difficult subject to discuss openly. It remains challenging for many reasons but perhaps at the heart of the challenge is accepting that even when lives are lost, there is meaning to be found. Our Lord confronts this notion head on. Resurrection can only occur as a result of death and this thankfully puts death in a position of not having the last word. Believing this as Christians is very important as it gives us a remarkable sense of hope that actually begins to give a fuller meaning to understanding life.

There is something beautiful about all this being punctuated by the events of Advent and then Christmas. Advent is often thought of as being penitential because of the Christian symbolism of the liturgical colour purple, but Advent's witnessing is actually twofold. While it is a season in which Christ's first coming to us is remembered, it is also a season where remembrance itself directs the heart and mind towards the second coming of Christ at the fullness of time.

With this in mind, as difficult a season as it can be; remembering is actually such a very important part of our Christian lives. It helps us to understand that death is not a threat of a return to an idea of 'nothingness', but that life, yes even eternally, is very much written into the very nature of what is created.

Rev George

The Children's Society

A big thank you goes out to all the boxholders who this year have collected a grand total of £868 for The Children's Society.

It's hard to accept that thousands of children and young people in England are living in poverty, in fear of violence, being neglected and discriminated against. The Children's Society needs public support to fund the work they do with these vulnerable youngsters to make their lives better.

Could you help The Children's Society to work for a better childhood for every child?

Would you consider becoming a box holder? You just have a collecting box at home and I collect it once a year to empty it and count the contents. Some people put money into their boxes regularly while others simply drop their loose change in it; one lady who has a bus pass puts the bus fare she has not had to spend into it. It's a simple way of giving.

If you would like to do that or if you feel you could support the charity in any way please contact me for more information or visit their website **www.childrenssociety.org.uk**

Thank you.

Sylvia Hales
Tel. 235933



Village News distributors retire

John and Rosemary Collins have decided to hang up their walking boots and retire from delivering the Village News. They have been doing their round along Wyman's Lane including Morris Hill Close, Drayton Close and part of Swindon Lane for more than 40 years.

On behalf of Swindon Parish Council, St. Lawrence's Church and everyone on their round we would like to thank them both for their dedication and reliable service over such a long time.

The Editors

St. Lawrence's Church

Christmas Tree Festival

“Hobbies and Pastimes”

Saturday 1st and Sunday 2nd
December

11.00am to 5.00pm

On the Sunday join us for
Together @ Ten Thirty among the trees

Display of Christmas Trees
Vote for your favourite tree
Sale of Christmassy goods and gifts
Musical entertainment
Hamper raffle
Children's craft activity
Refreshments



Free admission but donations to the St. Lawrence
Restoration Appeal would be gratefully received.

Christmas Tree Festival

Saturday 1st & Sunday 2nd December

It's not too late to join in!

The Christmas Tree Festival makes a lovely start to the festive season, bringing together religious and secular aspects of Christmas.

We invite everybody, individuals and groups, to decorate a tree on the theme of "Hobbies and Pastimes" and display it to the public. The theme can be interpreted in any way you wish and you don't even have to use a tree - we've had a traffic cone and a child's toy rotary washing line in the past. It's not a competition - the only honour is to be voted the favourite tree by the visitors.

All you have to do is bring your tree to St. Lawrence's church on the Friday evening between 4pm and 8pm, either ready-decorated or come and soak up the excitement as you join other people decorating trees in the church. We ask that your tree is no more than 4ft tall as we only have a small church! Most of the trees will stand on tables. We cannot supply electricity to the trees so any lights you use must be battery-powered. (There will be someone on hand each morning and evening to turn your lights on and off for you.)

We leave the trees in place for the evening service on Sunday and ask you to collect them on Monday at a time that's convenient.

Admission to the festival will be free but we'll be grateful for donations to the church's restoration appeal. Ancient buildings like St. Lawrence's Church are always in need of restoration and maintenance and our current project is to re-roof the church tower which is starting to leak.

If you would like to take part in this annual extravaganza or find out more about it please contact me.

Karen Evans

tel. 241678

Email - cuckoosnest5@yahoo.co.uk

P.S. If you would like to donate items for the hamper raffle please contact Mandy Jilbert on 693639. Thank you.

Wednesday Club

Our meeting in October was very well attended by our members for Kirstie Bingham, a representative from the John Moore Museum, to talk to us about “Birch, Beer and Bibles” in Tudor times.

This Museum is in Tewkesbury near to the Abbey, a row of cottages of which one is a museum, and another one is a replica of a Tudor house. The Baptist Chapel opposite is proven to be the oldest Chapel in England.

Kirstie was dressed in the costume of the period and explained that the clothes you wore told of your station in life. Only the rich dressed in frills and silks, the poor in more scratchy material in dark colours. It was a lovely and very interesting talk on many topics, too many to mention in this article.

We are busy arranging our annual meal and this year it will be at The Swan at Coombe Hill on Wednesday 2nd January. Any members that were not at last month’s meeting can contact me if you wish to join us on that lunchtime.

Our next meeting is on Wednesday 7th November and Derek Thorpe will be coming along to tell us about Guide Dogs and hopefully will he bring his own dog Jasper along with him. Do come along and join us for the evening, visitors are always welcome.

Looking forward to seeing you in November.

Pauline Wright

Art & Crafts Club

The future of the Village Hall is under discussion and is a concern to our club. Let’s hope we can rally round and come to a positive outcome.

Helen Dicks

At our October meeting John Chandler of the Victoria County History came along to tell us what they were up to. The VCH was started at the end of Queen Victoria's reign with the intention of producing a definitive history of each county. History is not a rapid business and after 120 years many areas of Gloucester have been dealt with but poor old Cheltenham has never been covered. One problem is lack of finance. However, work is now underway and, in the hope of having Swindon Village included, the Village Society has made a contribution to VCH funds. Again, lack of funding is causing a slow down so we just have to wait and see. At present the history of the village is best covered by the seven volumes of The Swindon Village Collection that we produced several years ago and the talk on the village's history that we roll out from time to time. Since those who produced these masterpieces cannot claim even an O-Level history between us we would be really interested to see how close we got.

In fact the VCH have produced a book of initial findings called 'Cheltenham Before The Spa' which can be bought at a few places but Swindon only gets a few mentions since we were not a part of Cheltenham in those days. It can't be said that the publication is a galloping read but it does give much detailed information on Cheltenham's early days when it was a small town straggling along one road.

Our next meeting will be a talk on some parts of Prestbury's history. Not sure of the exact details as yet and we can't read up in advance because they haven't been covered by VCH either. The talk will be given by Norman Baker from the Prestbury Local History Society. Prestbury has a long history with many old houses including a palace for the Bishop of Worcester. I seem to remember being told that it was one of the most haunted villages in England but I think that there are several other places that claim that title.

There is no meeting in December. In January we will have our AGM which we will try to keep short. After that there is normally a short presentation of some sort. For a while now I have been holding on to a collection of letters written by my wife's grandfather from the front line in the First World War and I thought I would read a few of the most evocative out. They are all written to 'Dear Dad and Mother' and I have to say I would not have written those letters to my mother. While the AGM is members only the letters from the front bit will start at about 8.15pm and is open to anyone.

Barry Simon

We were transported to the First World War by Geoffrey North at our October meeting. With the aid of pictures, readings and scrapbooks he told us of the group of Voluntary Hospitals in Cheltenham. There were 8 main hospitals in Cheltenham, plus annexes, and 6 elsewhere - but all came under the umbrella of the Cheltenham Group. They were situated at the Racecourse and Naunton and St John's (Gloucester Road) Schools amongst other places. Cheltenham was chosen mainly because of the good railway access and the easy connections to the ports of repatriation, from whence the specially adapted ambulance trains could transport the casualties. The hospitals were staffed by the Voluntary Aid Detachment and FANYs (First Aid Nursing Yeomanry – Princess Royal's Volunteer Corps) and patients wore special uniforms. They partook in sporting activities, concerts, carnivals and other local activities to entertain themselves during their recovery. Looking at Cheltenham now it is difficult to imagine all that went on here at that time, and how important the town was.

A few members are still enjoying the Walking Netball, where we have some matches planned in the near future. An evening to inspire us with our displays at the County Centenary Exhibition in the Cathedral next year, workshops for Kumihimo (Japanese braiding) and Glass Engraving, a meal at the Giggling Squid, Julie's coffee morning (with hot toasted crumpets!), the Book Club at Marilyn's, The Craft Club with a meringue demonstration at Wendy's, walks and Clay Pigeon Shooting were amongst the other activities for the month.

In November we have our Birthday Party meal at Doubletrees to look forward to and there is a Fun Day at WI House making things for Christmas. A group of members are joining the County weekend trip to see 'Chatsworth at Christmas' and the Richard III Exhibition in Leicester, on the way home.

Our November meeting is taken up, as usual, with our Annual Meeting. After all the business we shall relax over a cup of tea and enjoy some time socialising.

Sara Jefferies



CHELTENHAM LIONS CLUB

Do you have any good condition paperback books that you do not need?

If so then the Lions Club Cheltenham could use them to help raise funds.

We require paperback books only, covering the categories of:

- * Crime
- * Adventure
- * Romance

If you would like to donate your old books please contact (01242) 527534 to arrange collection by us.

Sorry but we do not take hardback books.

Adam Carter

as

Elvis Presley

Saturday 24th November

Swindon Village Hall

Doors 7.30pm

Show Starts 8pm

£15.00 per person - Advance tickets only

Call Dave

07887 571330

In aid of Midlands Air Ambulance

Cheltenham Remembers.



WW1 Memorial March

Saturday November 10th

New Route: Sandford Park to Montpellier Gardens
1:30pm start

Cheltenham **lost more than 1,200** servicemen and servicewomen in
WW1. We invite you to **represent one of their names.**

Register to take part now

www.cheltenhamremembers.org.uk

Cheltenham Remembers

Cheltenham lost more than 1,200 servicemen and servicewomen in the First World War. In this centenary year, we invite you, your family and your friends to represent one of the names on the Cheltenham war memorial as we march through the town, passing the war memorial, to Montpellier Gardens where there will be a short service of remembrance. Each participant will carry the details (and photo where available) of one of the named casualties on the Cheltenham war memorial.

For more details and to register for a place please use this link:

<https://www.eventbrite.co.uk/e/cheltenham-remembers-ww1-memorial-march-tickets-49890692404>

Louise Forey

Cheltenham Borough Council

Tel 01242 264297

Thinking about hedgehogs on bonfire night

Our gardens are important places to hedgehogs, providing them with food and shelter. This is why it is important to think carefully before lighting your bonfire.



Hedgehogs like to make nests in leaf piles; this might be your bonfire pile. The safest, most hedgehog-friendly way to burn down your garden waste is to light a small fire next to your pile and then transfer on a forkful of bonfire material at a time, taking from the top of your pile and working down. Alternatively, rebuild your bonfire pile on the day that you are going to light it.

To find out more about Hedgehog Way, visit
gloucestershirewildlifetrust.co.uk

Georgia Spooner

Urban Wildlife Project Officer at Gloucestershire Wildlife Trust

georgia.spooner@gloucestershirewildlifetrust.co.uk



ALEXANDER BURN FUNERAL DIRECTORS

**Alexander Burn is an independent family business with
four offices covering the Cheltenham and Tewkesbury area.**

COURTEOUS, EFFICIENT AND RESPECTFUL

24 hour personal service | Private chapels of rest

HM Coroner and NHS Funeral Director for Gloucestershire

www.alexanderburn.com

Bishops Cleeve
22 Church Road
01242 673300

Cheltenham
436 High Street
01242 245350

Winchcombe
11 North Street
01242 604888

Tewkesbury
23-24 High Street
01684 276200



SJB Carpentry & Joinery

All Aspects of Carpentry and Home
Maintenance

Handmade Furniture
Bespoke Storage Solutions
Stairs & Bannisters
Doors & Windows
Flooring, Skirtings & Architraves
Floor & Wall Tiling
Gates, Decking & Pergolas

Contact Stu for a free quotation on

Tel: 07729912530

Email: sjb_carpentry@yahoo.co.uk
Website: www.sjbcarpentryjoinery.co.uk

Advertise your business in
Village News

Monthly rates

Whole page £36
Half page £18
Quarter page £9

Contact the Editors

Village News is delivered to
900 homes in Swindon Village

VILLAGE ORGANISATIONS

Footpaths	John Heathcott	527753
Acting Scout Leader & GSL	Stephen Smith (Sos)	693107
Cub Scout Leader	Rachel Smith (Chil)	693107
Beaver Leader	Hugh Stanford	svbeavers@gmail.com 706020
Rainbow Guider	Jackie Bailey	07871 169308
Village Hall Booking Secretary	Sandy Thornton	232045
Village Hall Secretary	Rose D’Gama	574964
Wednesday Club	Pauline Wright	693112
Play Group	(Playgroup hours)	690479
Winemakers’ Secretary	Roy Harper	662861
School Headteacher	Geraint Mills	690016
Friends of the School	Sarah Vallender Nic Jackson	chairfosvps@gmail.com
Art & Crafts Club	Adrian Skilling	690928 adrian.skilling@gmail.com
Swindon Village Society	Barry Simon	521723
Mary Godwin Under 5s	(Playgroup hours)	263746
Marle Hill W.I.	Sara Jefferies	692500
Save The Countryside	Helen Wells	07770 986078

Please inform the editors of any changes to the contact details for village organisations.

Deadline for the next issue of the Village News is the 16th of this month.
Please send contributions to the editors via
Karen Evans at 5 Manor Road
or e-mail village-news@swindonparish.org.uk

SWINDON PARISH COUNCIL

Chairman	Cllr. Peter Allen	692933
Vice Chairman	Cllr. John Conmee	572060
	Cllr. Helen Wells	220875 or 07770 986078
	Cllr. Yvonne Pirso	515095
	Cllr. James Cornish	07950 196709
	Vacancy	
	Vacancy	
	Vacancy	
	Vacancy	
Clerk to the Council	Mr Shaun Cullimore	07833 089435 parish.clerk@swindonparish.org.uk
Cheltenham Borough Councillors	Cllr. Flo Clucas	255844
	Cllr. Bernard Fisher	07523 421012
County Councillor	Cllr. Bernard Fisher	07523 421012
Allotments Manager	Ian Brown	528683

Swindon Parish and Community Website: www.swindonparish.org.uk

ST. LAWRENCE CHURCH

Part of the North Cheltenham Team Ministry

Team Rector	Rev. Nick Bromfield	nick.bromfield@northchelt.org.uk
Team Vicar	Rev. George Davis	fr.georgedavis@hotmail.com 702890
Reader	Ralph Griffin	510533
Churchwardens	Tony Jilbert	693639
	May Shurmer	241033
Tower Captain	Hugh Evans	241678
Organist	John Collins	511950
North Cheltenham Team Ministry Office St. Nicolas' Church, Swindon Lane, Cheltenham GL50 4PA		244373 admin@northchelt.org.uk

The office is open on Monday to Friday 9am to 12 noon. Outside these hours please leave a message on the answer phone.

The contents of this newsletter do not necessarily reflect the view of the