

# Village News

in Swindon Village

*Your local Newsletter sponsored by the  
Parish Council and delivered by volunteers*

No. 466      September 2020



*Tawny Owl near Swindon Hall  
Photograph by Rachel Hunter*

## **SWINDON PARISH COUNCIL WEBSITE, FACEBOOK PAGE AND GROUP**

Please join Swindon Parish Council's Facebook page and group for local information and discussion. If you do not have access to the internet you could ask a friend or relative to join on your behalf and share highlights with you.

- **Swindon Parish Council Facebook Page.** A public page for local information and news from the Council:  
<https://www.facebook.com/swindonparish>
- **Swindon Parish Community Group.** A private group for discussion of local issues, sharing and requesting help:  
<https://www.facebook.com/groups/swindonparishcommunitygroup>
- **Swindon Parish Council website.** For full information from the Parish Council:  
<https://www.swindonparish.org.uk/>

If you receive this newsletter then you are living in Swindon Parish.

If you have concerns about anti-social behaviour do not hesitate to contact the police.

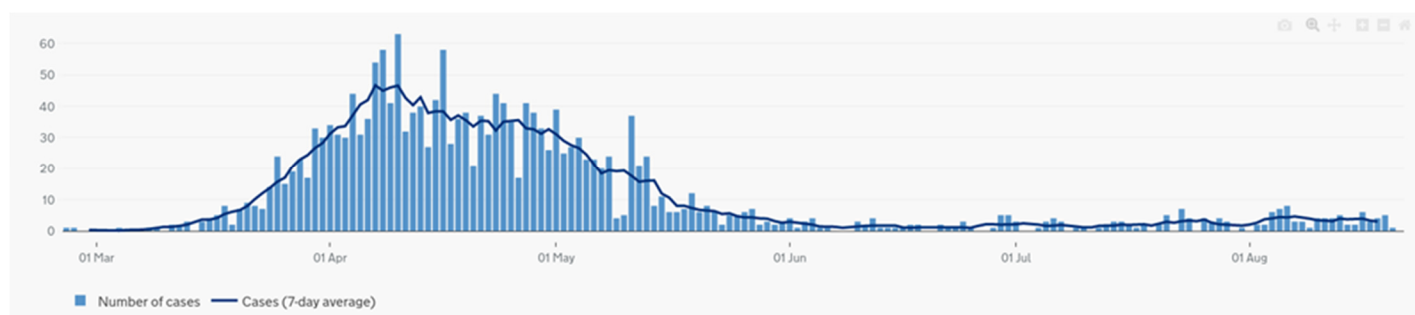
**Ring 101** (you may be charged for this call)  
**or email 101@gloucestershire.police.uk**

Get an incident number and let the parish council know about it.  
If the police are not made aware of a problem THERE ISN'T A PROBLEM.

*(Full minutes of all Parish Council meetings are available on the Parish website [www.swindonparish.org.uk](http://www.swindonparish.org.uk). They are also available on request from the Chairman.)*

I seem to write about dog waste more than any other topic. We are trying to get more dog bins and encourage everyone to use the ones we have. The Borough Council have run a campaign “any bin will do”. Please note that this refers to the Borough Council’s public bins. Please don’t put dog waste in the green wheelies or food bins of residents.

Last month I presented you with a graph of the number of COVID-19 cases in Gloucestershire. The graph was tapering towards zero in a very reassuring fashion. The newest graph is a bit of a rude awakening.



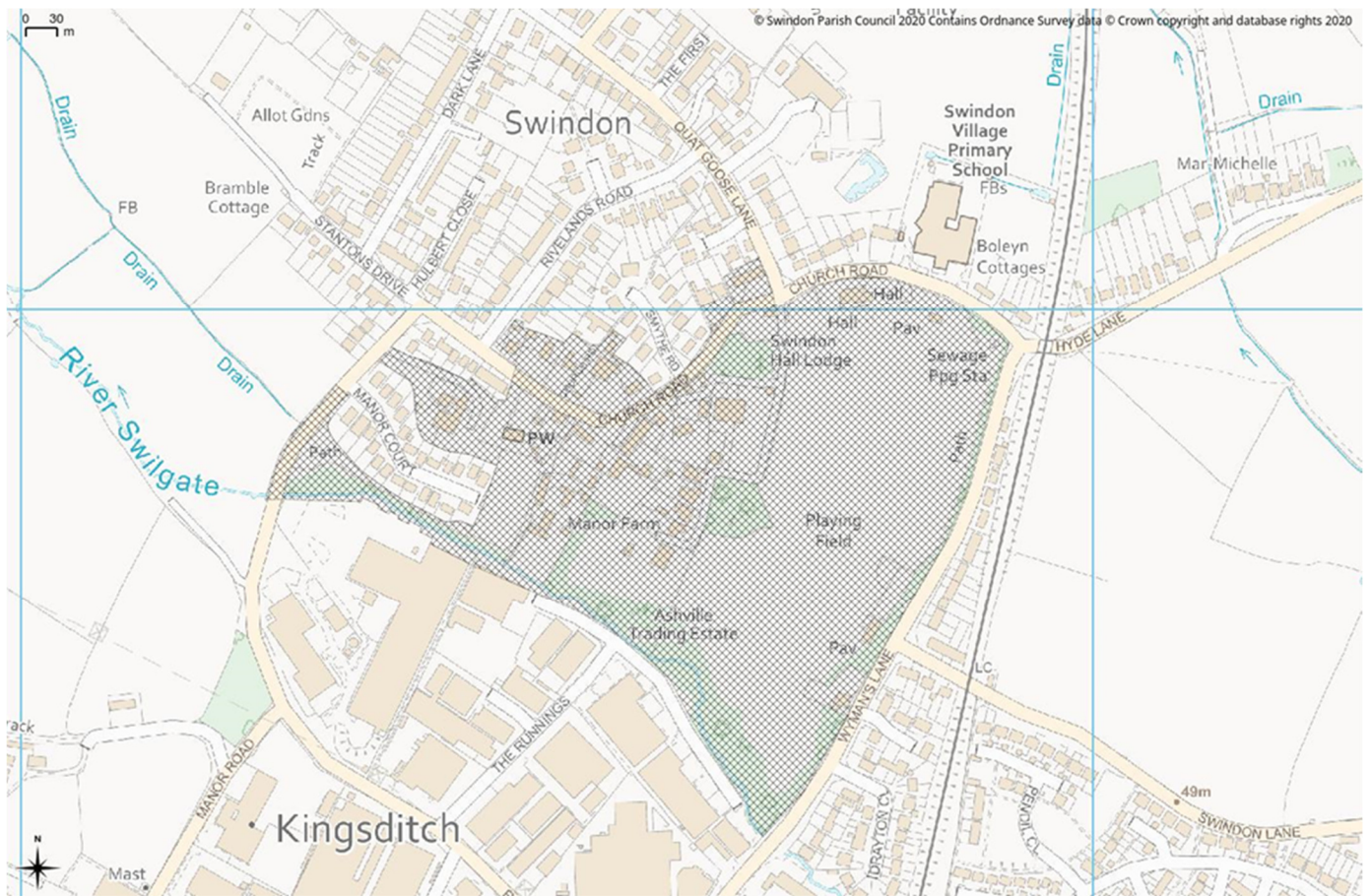
You can see that, as we moved from July into August, the number of cases has seen an increase. We all need to remain vigilant and obey the rules regarding the wearing of masks and social distancing. Please do your bit to help keep people safe, especially the vulnerable.

COVID-19 (or coronavirus) attacks the respiratory system. With this in mind I have been asked to politely request that we all minimise the use of bonfires to dispose of garden waste (or any other waste for that matter).

I note that some people have been leaving surplus garden or allotment produce outside their houses for others to take. This is kind and generous and a fine example of community spirit. Of course, we must remember that social distancing rules apply to this as in all things.

The Parish Council has become concerned at the loss of trees in the parish. As an example, Evans Halshaw operated a premises on the junction of Manor Road and Runnings Road. A number of mature trees were cut down to make space to accommodate more cars for sale.

Ironically, shortly after the trees had been felled Evans Halshaw moved out of the area. The Parish Council has asked me to speak with the Borough Council Tree Officer. In the Conservation Area (shown on the map below) trees are protected and permission is needed before they can be felled or significant maintenance work can be undertaken.



The Conservation Area is shown with cross hatching. Outside this area a tree is not protected unless it is the subject of a Tree Protection Order. We will be talking to the Tree Officer to identify trees in the wider parish deserving of protection.

Finally, it is good to hear that the Village Hall will be opening its (brand new) doors soon. The team will of course be operating under COVID-19 secure procedures.

Stay safe and well!

**Shaun Cullimore**  
Clerk to Swindon Parish Council  
<https://swindonparish.org.uk>



## **Planning Matters**

The Parish Council is a consultee on all planning applications made in the parish. Here is a summary of the most significant recent items.

### **Elms Park**

The major proposed development we are considering at the moment is the Persimmon Homes application for phase 1 of Elms Park. I described the application in some detail in the last issue. The Parish Council has now submitted detailed comments to the Borough Council. They can be viewed on our website but, in summary, our primary concerns are as follows:

(1) Phase 1 of the development does not address any of the infrastructure needs of Elms Park. The overall development promises schools, medical facilities and shops. How do we know these will happen if the development is built out piecemeal?

(2) The appearance of the proposed buildings is starkly at odds with the character of other local buildings and the Conservation Area, nor do the drawings reflect the topography of the site.

(3) The proposed site access deviates from commitments made in the outline planning application, and there is no evidence to demonstrate that the local roads can cope with the extra traffic.

(4) The flooding assessment fails to acknowledge the local experience of flooding.

(5) The design of the development does not address sustainability in any meaningful way (e.g. there is no Energy Policy, there are no electric car charging facilities).

### **Manor Farm**

The other major planning application being considered is for further development on the Manor Farm site. We objected to the development behind Manor Court but, unknown to us, that was only phase 1. Five more houses are proposed for the site. We felt the access road was unsuitable for the first development. Another five houses will not improve matters.

### **Brockhampton Lane**

Approval was granted for the development along Brockhampton Lane on

the edge of Swindon Village. Note that Brockhampton Lane is planned to be closed from 5<sup>th</sup> October to 13<sup>th</sup> November to allow the works to proceed. Earlier dates had previously been proposed.

The developer is considering how the new streets should be named. The proposal is that each street name will use one of the names below followed by "Road", "Close", "Street", etc. The names are:

- Apple Blossom
- Orchard
- Oak Tree
- Cortland
- Bramley
- Empire

The consultation on the names will end on the 4th September. These choices seem a bit bland and generic. If you have a view you can make representations in writing to **[streetnaming@cheltenham.gov.uk](mailto:streetnaming@cheltenham.gov.uk)** or contact the Street Naming and Numbering team on 01242 264329.

## **Belmont**

This is the new house off Hyde Lane that replaced the older dwelling of the same name. Permission has been granted for the driveway to the house to be realigned so that it emerges further along Hyde Lane where visibility is better. The drive will now go through a field that is Green Belt. The planning officer assures us that the rest of the field will retain its Green Belt status.

There is a list of all planning applications in the parish on our website. From there you can click through to each application and exercise your right to express your opinion.

## **Shaun Cullimore**

Clerk to Swindon Parish Council  
<https://swindonparish.org>

## **Local Green Space**

It has been a long, hard battle to secure an area of Local Green Space (LGS) around Swindon Village to protect its important context and prevent it becoming part of the increasing urban sprawl. Perhaps it was more a war than a battle, because it involved a series of individual skirmishes. Firstly, with the support of local individuals and groups, we had to win it a place in the Joint Core Strategy (JCS). Having achieved that, the JCS was then subject to an independent review. The Planning Inspector leading the review had to be convinced we had a robust case.

The next stage was to transfer the aspirational principle in the JCS into a more concrete (excuse the pun) and detailed representation in the Cheltenham Local Plan. With the help of the Borough Council, but driven by our Parish and Borough Councillors, this was achieved. Next came the independent review of the Local Plan. Incredibly, even at this late stage, the need for, and validity of, a Local Green Space was rigorously questioned. The process had gone on for so long we were told that the rules had changed and we would have to justify ourselves all over again. The Planning Inspector thought that the area we were defining was far too big and wanted to see it reduced to 7.2ha. If the Planning Inspector thought that she could remove or diminish, with a stroke of pen, what had been robustly argued and finally agreed, she was to be surprised.

To take the “war” analogy to its logical conclusion, we stuck to our guns. We had fought hard to secure the LGS and were not going to concede major ground at the eleventh hour. The Planning Inspector recommended some major modifications to the Local Plan but left our Local Green Space little changed at 21.6ha. It is worth quoting from the Inspector’s final report.

*“Although the 21.6ha area proposed for LGS is a large area of land, it is demonstrably special to the existing local community, and holds a particular local significance in providing a green buffer between Swindon Village and the development of 4000 new homes to the north west. In all these circumstances I consider that the designation of the area...is consistent with the JCS and justified”.*

On the 20<sup>th</sup> July Cheltenham Borough Council signed off the Local Plan together with its modifications. Our Local Green Space is now enshrined in planning policy for the area.



The Parish Council has now started to work with the Borough Council to explore who will own the space, how it will be maintained and how it will be used. There are many possibilities. Should we see if we can extend the allotments? Should part of the land become a community orchard? Perhaps simply a green area with play equipment for children or “outdoor gym” equipment for adults. Perhaps you have other ideas. Let us know.

**Shaun Cullimore**

Clerk to Swindon Parish Council

<https://swindonparish.org>



## Facebook

Our Swindon Parish community Facebook site is running well with 133 members so far.

Thanks to the admin team and all members for the sharing of useful information and local knowledge.

From pets or even garden gear lost in the storm to service recommendations, it's a handy place to visit now and then.

Feel free to join and post your news, comments, help, suggestions and anything positive to help our community.

Thank you.

**Helen Wells**



### **Village News production team needed**

It's good to see the growing success of the community electronic communications through the Parish website and Facebook.

The Village News still has a part to play. Since I announced my intended retirement as editor I have received many messages of thanks from people who have all expressed their hope that the magazine will continue.

Please consider if you could be part of a new production team to keep the magazine going.

Simple desk-top publishing software is all you need to prepare the magazine for printing. Printing is done by professionals.

It's been good to have the opinions of a second editor. Advertising in the magazine could be overseen by a third member of the team.

Please just contact me if you think you can help.

**Karen Evans**

**tel.01242 241678 or email [village-news@swindonparish.org.uk](mailto:village-news@swindonparish.org.uk)**

## Services and events in September

6	Sunday	10.30am 6.30pm	Morning Prayer Holy Communion
9	Wednesday	10.00am - 12noon	Private Prayer
13	Sunday	9.15am 6.30pm	Holy Communion (BCP) Evensong
16	Wednesday	10.00am - 12noon	Private Prayer
20	Sunday	9.15am 6.30pm	Holy Communion Evensong
23	Wednesday	10.00am - 12noon	Private Prayer
26	Saturday	9.00am onwards	Churchyard tidy-up
27	Sunday	9.15am 6.30pm	Holy Communion Evensong
30	Wednesday	10.00am - 12noon	Private Prayer

## Changes to Services at St Lawrence Church

From the beginning of September, there will be some temporary changes to the rota of morning services at St Lawrence Church for the foreseeable future:

First Sunday of the month: 10.30 am: Morning Prayer  
6.30 pm: Said Holy Communion

All other Sundays of the month: 9.15 am: Said Holy Communion  
6.30 pm: Evening Prayer

The 9.15am Holy Communion on the second Sunday of the month will be taken from the Book of Common Prayer.

On the fifth Sunday of the month the usual rotation of Songs of Praise will continue. So there is one on Sunday 30<sup>th</sup> August at St Mary Magdalene, with the next one planned for Sunday 29<sup>th</sup> November at St Lawrence.

At the current time Together @ Ten Thirty won't be operating and in its place Morning Prayer will be said. This is being looked at and it is hoped that T@TT will be re-introduced in the future, once there are fewer restrictions due to the current pandemic. Together @ The Table is being suspended and replaced with Holy Communion at the earlier time of 9.15am. This will also be looked at in the future.

Please do keep an eye on the News Sheet and website for updates about services.

**Rev. George**

### Enquiries about baptisms or weddings

If you would like to enquire about baptism (also called christening) or would like to book a wedding in St Lawrence's church, please contact the Team Office, which is open Monday to Friday from 9am until 12 noon. The office is based at St Nicolas' Church in Swindon Lane. Contact the Office on **244373** or **admin@northchelt.org.uk**

**You can contact the clergy by email:**

**Revd. George Davis (Team Vicar) fr.georgedavis@hotmail.com**

**Revd. Nick Bromfield (Team Rector)**

**nick.bromfield@northchelt.org.uk or via the office.**

During this time which remains somewhat uncertain from week to week, it's difficult to find that sense of certainty which we naturally rely upon. Certainty tends to govern aspects of our lives, in a way which helps to make decisions easier to make. Many of us are creatures of habit, and habitual living feels far removed right now... and so life, for some, has lost that spontaneity and momentum.

As we approach what is traditionally recognised as being the beginning of a new school year, uncertainty remains as to how this will all unfold going forward. The answers are unclear, only because at this time we seem to be all living our lives at the mercy of the virus, and what our government instructs us to do.

As I've pondered the strangeness of all this, I've come to realise that we are perhaps not quite so in control of our 'comings and goings' as we'd like to think. Some may argue, were we ever? However, if this be true, then where are we to find our sense of security and foundation; perhaps this could otherwise be called, our sense of self? Jesus spoke at length about foundations as being central to any structure's longevity. Other parts of the Bible also speak about the great importance of foundations. Without a strong foundation, a building won't stand for very long at all. It need not be lavish, but simply strong. It was this symbolism that Jesus and biblical writers used to emphasise what should necessitate being human. It was a call to make known that our sense of stability and knowing is rooted in God as our unshakable foundation.

It's useful to consider ourselves a bit like structures of sorts. Without a firm foundation, the challenges that life throws at us have the potential to topple us over in a way which can render us unfixable. However, with a strong foundation, parts of a building may come loose and wear away, but those areas can be patched up and even made right again.



Jesus once told a story about a man who laid his foundation on solid ground to build a house. When a flood came it rested secure because it was built well from the ground up. There was another man who chose to build his house in an area with no foundation, and the floods came by and swept it away (Lk 6: 46-49). And so Jesus goes on to explain that having a close relationship with God is what will help us to stand firm during those testing times and moments, whatever they may be.



*O God, the protector of all who trust in you,  
without whom nothing is strong, nothing is holy:  
increase and multiply upon us your mercy;  
that with you as our ruler and guide,  
we may so pass through things temporal  
that we lose not our hold on things eternal;  
through Jesus Christ our Lord. [The Jesus Prayer]*

**Rev George**

**Churchyard tidy-up  
Saturday 26<sup>th</sup> September**



Do you fancy a bit of gardening?  
Socially distanced, of course!

Would you like to help tidy up the churchyard  
ready for the winter? There are weeds to pull  
up, bushes to prune and ivy to pull off the  
walls etc.

We'll be getting together for the annual churchyard tidy-up on  
**Saturday 26<sup>th</sup> September starting at 9am.** Any help during the  
morning would be most welcome. Please bring your own tools but  
we'll supply rubbish bags as well as drinks and biscuits.

Looking forward to seeing you!

**May & George**



# Gloucestershire Historic Churches Trust

## Ride & Stride

**Saturday 12th September**

The Gloucestershire Historic Churches Trust raises funds and provides £150,000 in grants for churches every year in Gloucestershire, South Gloucestershire and North Bristol. Their church renovation and maintenance grants help these buildings stay alive as active centres of community life and landmarks of the wonderful architectural heritage of this area.

**Ride+Stride is a nationwide event supported by the National Churches Trust but organised by local historic churches trusts. All around the country on the second Saturday in September each year, thousands of people are sponsored to travel from church to church by walking, cycling or other methods. Others organise local special events and challenges. Funds raised are split between the Trust and local churches in Gloucestershire, South Gloucestershire and North Bristol.**

St. Lawrence's church has been the grateful recipient of generous grants from the Trust in the past and we hope for the Trust's continuing support in the future, so we always try to support this event.



Karen Evans and May Shurmer are taking part this year and would welcome your sponsorship.

Karen is celebrating her new-found love of the outdoors by walking between the five churches of the North Cheltenham Team Ministry, starting from All Saints, Pittville, and visiting both Prestbury churches (St Mary's and St. Nicolas'), Swindon Village and finishing at Elmstone Hardwicke.

May is going to walk around the perimeter of St. Lawrence's Church 100 times while being on hand to welcome visiting Riders and Striders to our church.

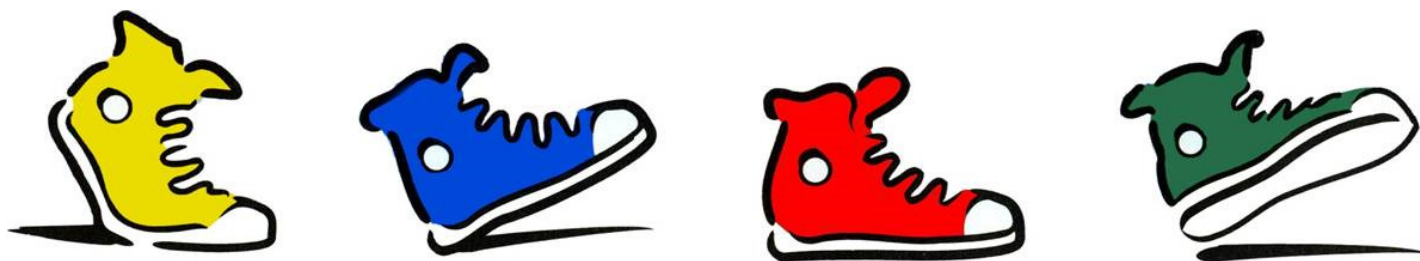
Both of them have sponsorship forms. You can also donate to their fundraising through Just Giving at <https://www.justgiving.com/fundraising/St-Lawrence-s-Church-Swindon-Village-Cheltenham> (or go to [www.justgiving.com](https://www.justgiving.com) and search for Gloucestershire Ride & Stride and look for our church).

The Trust will give half of the money raised by Karen and May directly to St. Lawrence's.

For information on the Gloucestershire Historic Churches Trust take a look at [www.ghct.org.uk](http://www.ghct.org.uk).

If you would like to take part in Ride & Stride yourself for St. Lawrence's, Karen can give you the details and a sponsorship form.

**Phone Karen on 01242 241678.**



These boots are made for walking... !

## Sharing

I found that one of the benefits of lockdown was getting to know neighbours – after all, the occasional greeting on the street or a chat over a garden fence was the only direct contact with others. People started being more friendly with each other and the sense of community grew stronger. This was helped by the Swindon Parish Community Facebook group, where people started sharing their ideas, good news stories, advice and (sometimes) their frustrations.

When I found I had vast amounts of greengages, courgettes and rhubarb that I couldn't eat I put them out on my garden wall and let everyone on Facebook know. And before long they were gone, and others had left plums, apples and tomatoes for sharing.

I also noticed a 'library' on one of the streets where people were leaving and collecting books, which is a really nice idea. I'm hoping that with the Facebook group and the general increase in friendliness in the village, the sense of community will get stronger and stronger. And if you have anything to share, please do find a convenient place to put it and let people know.

Thank you!

**Arran Stibbe**

*Arran's "sharing wall"*





## The Children's Society Home collecting boxes

It's time for the annual emptying and counting of The Children's Society home collecting boxes.

Sylvia Hales handed over the reins to me this year and I express thanks to Sylvia on behalf of all the box holders for her efficient and cheery handling of the task for many years. I hope I can do as good a job.

Please will box holders bring their boxes to me or, if you can't, please phone me and I'll arrange to collect them from you.

Thank you for your help.

**Helen Harris**

2 Manor Court

Tel. 01242 239239

This is an unusual paragraph. I'm curious as to just how quickly you can find out what is so unusual about it. It looks so ordinary and plain that you would think nothing was wrong with it. In fact, nothing is wrong with it! It is highly unusual though. Study it and think about it, but you still may not find anything odd. But if you work at it a bit, you might find out. Try to do so without any coaching!

@dailygenius

Answer on page 27



"Refer Today. So You Don't  
Have To Worry Tomorrow"

# Do you look after someone? Then...who looks after you?

**Do you look after someone who matters to you and needs your help? Then we are here to look after you.**

Our friendly, local, trained advisors can provide information and advice on a wide range of subjects, offer support to suit your needs, or just be there to listen.

## Get in touch:

- ☎ 0300 111 9000
- @ carers@peopleplus.co.uk
- 🌐 www.gloucestershirecarershub.co.uk
- f twitter.com/@GCarersHub
- 📘 facebook.com/@Gloucestershirecarershub



Gloucestershire CarersHub is a commissioned service by  
Gloucestershire County Council and NHS Gloucestershire  
Clinical Commissioning Group.





"Refer Today, So You Don't  
Have To Worry Tomorrow"

# Every day another 6000 people take on a caring responsibility.

That equals over 2 million people each year.

Gloucestershire Carers Hub is commissioned by Gloucestershire County Council and NHS Gloucestershire Clinical Commissioning Group. We opened our service in April 2019 and have been supporting Carers ever since.

## Some of the ways we can help include:

- Information, Advice and Guidance (IAG), from our trained, local triage team
- Professional counselling service
- Signposting to other services
- Benefits and finance advice
- Befriending and mentoring
- Employment Support
- Full assessments, support planning and reviews
- Carers Emergency Scheme
- Carer Breaks
- Access to groups
- Volunteering
- Training

**If you would like to talk to one of  
our trained advisors, you can  
get in touch by phone, email  
or by visiting our website.**



Gloucestershire Carers Hub is a commissioned service by  
Gloucestershire County Council and NHS Gloucestershire  
Clinical Commissioning Group.



There is still a fairly constant lack of Village Society activity of late so once again I will resort to nature notes.

Last year The Gloucestershire Wildlife Trust set in motion a campaign to monitor hedgehogs in Swindon Village. They believe we are a good place to encourage hedgehogs. To this end several people were recruited to check their gardens for hedgehogs. They were provided with a triangular tunnel. In this some cat food was placed in the centre, lines of black goo painted either side of the food and white paper pinned outboard of the goo. Any hungry little creature would head for the food and in doing so put its feet in the goo and leave footprints on the paper on the way out. They were also provided with a diagram showing the footprints of the animals you were likely to attract. I had one of these and tracked cats, a mouse, a rat and possibly a giraffe but I am not certain of the latter. No hedgehogs.

However, several people did register hedgehog footprints and so it was confirmed that the beasties are in the area. Indeed several sightings were made and a few photographs taken.

Encouraged, GWT are having another go this year. Again I have registered only cat paw prints but I am happy to say that we have actually managed to photograph a hedgehog in our back garden and found what we believe are hedgehog droppings several times. It would seem that our hedgehog does not like the idea of a tunnel or disdains cat food. However, one or more local cats feel differently and once again I have a fine collection of paw prints.

At this stage I would like to offer my apologies to any local cat owner whose cat is steadily putting on weight and who keeps arriving back from a night on the tiles leaving a trail of black footprints on the kitchen floor.

What I do know is that over the last month I have seen three hedgehogs dead on the roads in the village. Two were close together in Manor Road and the third on Church Road close to the Hall. These have been reported to GWT. I don't know whether it is a good or bad sign. It was definitely a bad sign for the three beasties involved but maybe it just shows that there are many more hedgehogs in the area than a few years ago. I do know that there have been several sightings of hedgehogs in the Hall grounds and that because we do not have solid walls between the various properties we are an ideal place for them because they do like to roam free.



If anyone not involved in the monitoring would like to let me know of encounters with hedgehogs in their gardens please send me details at **barry\_simon@hotmail.com** and I will pass them on to GWT who will be pleased to receive the information.

I will repeat my ending to last month's notes. I do not know when we will all meet again but all the best to you all. I have a feeling that all those with membership for this year will get a free ride next year.

**Barry Simon**

### Hedgehog tunnel in Hugh and Karen's garden



*Left: The tunnel in place, pinned down with tent pegs.*

*Below: The base plate prepared with a small quantity of hedgehog food in the middle, strips of sticky ink and paper to collect the prints.*



*Above: The base plate in the tunnel.*

*Right: Result - a good set of footprints.*





Marle Hill WI is still alive and kicking despite the Lockdown that has been imposed on us all! The members have been keeping in contact with each other by phone, e-mails, Zoom and the occasional 'meet up'.

On several sunny afternoons you may have seen a number of ladies heading for Pittville Park and the Pump Room armed with a folding chair. There we have spent an enjoyable time chatting, catching up with news and refreshed with tea and cake or ice-creams from the café. They have even provided some mobile loos.

On other occasions we have met in the field behind St Nicolas' Church and under the large chestnut tree behind Swindon Village Hall. Committee meetings have been limited to members' gardens.

Each member has contributed a page to a Lockdown Scrapbook that is to be passed around. I am looking forward to seeing what the others have been up to. A few of us ventured out to The Terrace for lunch under the subsidised scheme and also met up at Swindon Village Hall to test out the Friday Night Bar. These occasions make us feel as if, maybe, life is slowly beginning to return to 'normal', though somewhat cautiously.

Our planned holiday to the Isle of Wight has been deferred until October and the trip to Italy until next year. However, as all the various courses and activities have been cancelled until further notice, the internet has proved to be a boon and much-used for on-line talks and activities. The Walking Netball participants have been meeting for an hour or so in the park for fun and games, albeit with distancing and their own individual ball. We are working out how to have a meeting in St Nicolas' Hall in September with the current restrictions. If successful, we do have a speaker willing to come.

Since I have been at home on my own so much, my cat, Lulu, seems to think she owns me. She has been great company and follows me everywhere, wanting to join in whatever I am doing. Hence, she has been trying to help me type this out on my desktop computer with her paws\$\$\$\$\$\$\$\$ (sorry, Lulu's contribution!), with some funny results. I hope I have deleted them all. Or maybe I should have left them in. I think she is trying to tell me that it is teatime! I must 'save' before she presses the 'delete' key.



*Here is Lulu doing her stretching exercises*

All the carers and other essential workers are on my mind daily and I thank them from the bottom of my heart for their dedication and hard work. It is devastating to see the loss and damage this virus has caused across the globe. Let us pray that solutions are found soon and we can return to a 'normal', if maybe changed, lifestyle. In the meantime 'keep safe' as they say.

**Sara Jefferies**

## 1st Swindon Village Scout Group

It hasn't been a normal few months for Scouting. When lockdown was introduced, The Scout Association banned face-to-face scouting and any sort of camping. But did we let that stop us?

The Scouts had online meetings during school terms and we had a good turn-out at most meetings.

In fact, we were pleasantly surprised by the enthusiasm of all our Scouts for the challenges we laid on for them.

The Scouts have been camping in their gardens, camping in makeshift dens under tables and even under the stairs – very much like Harry Potter.



Can you cook a meal using one pan, one knife, one plate and a chopping board? Well apparently they can and they did as these pictures show.



You will be hearing more from our Scouts in months to come as we get them involved in the Village News. In fact, we would like to get more involved in the Village in general. But right now we are limited by restrictions left, right and centre that prevent any of that.

We have seen remarkable resilience from our Scouts during this difficult period; we have seen kindness and supportiveness that we often miss during the chaos of a normal troop night. This bunch will bounce back as soon as the shackles are off and we can get back to normal Scouting: tents, sleeping bags and a good fried breakfast!

Until then, watch this space.

**Mike**

# DO YOU NEED COMPUTER SUPPORT?



## **Elwood Computer Services Ltd**

Professional Local IT setup & support

INSTALLATION – SETUP – PROBLEMS – REPAIRS – UPGRADES  
PC – MAC – LAPTOPS – TABLETS – MOBILE DEVICES & MORE

Is your machine running SLOW or NOT STARTING? VIRUS or MALWARE problems or protection? Transferring data, programs & settings to a new device? LOST or accidentally DELETED data? Confused about CLOUD storage & BACKING UP? PRINTER problems / installations / net-working...

HOME NETWORKING and INTERNET problems? BROADBAND SPEED SLOW? Router issues? WiFi coverage issue? WIRED network? Help with SMART DEVICES inc. home automations, lights, doorbells, speakers, TVs, security cameras...

Need help with setting up a bespoke EMAIL account, DOMAIN and WEB-SITE hosting?

WORKING REMOTELY FROM HOME? Make sure you're prepared with a decent connection and correct video / audio setup

*I can help with any computer related problems or support. Today's ever-changing computer technology can seem a daunting prospect for some and I can provide advice and solutions to make it as easy as possible for you.*

*I've been in the information technology installation & support industry for 23 years and can fix most problems at your premises or provide a collect and return service.*

*I can be your reliable, patient, technical support engineer!*

**VERY REASONABLE RATES**

Call or text Jon on **07525 691311** or email me at

**[jon@elwoodcomputerservices.co.uk](mailto:jon@elwoodcomputerservices.co.uk)**

Elwood Computer Services Ltd, Swindon Village.





# ALEXANDER BURN FUNERAL DIRECTORS

**Alexander Burn is an independent family business with  
four offices covering the Cheltenham and Tewkesbury area.**

**COURTEOUS, EFFICIENT AND RESPECTFUL**

**24 hour personal service | Private chapels of rest**

**HM Coroner and NHS Funeral Director for Gloucestershire**

**[www.alexanderburn.com](http://www.alexanderburn.com)**

Bishops Cleeve  
22 Church Road  
01242 673300

Cheltenham  
436 High Street  
01242 245350

Winchcombe  
11 North Street  
01242 604888

Tewkesbury  
23-24 High Street  
01684 276200

## **Get Active Fitness**

### **Mellow Moves**

**Currently suspended**

Fran Nichols 01242 523363

[www.getactivefitness.co.uk](http://www.getactivefitness.co.uk)

[www.facebook.com/  
GetActiveCheltenham](https://www.facebook.com/GetActiveCheltenham)

Advertise your business in  
Village News

### **Monthly rates**

Whole page £36

Half page £18

Quarter page £9

Contact the Editors

Village News is delivered to  
900 homes in Swindon Village



## VILLAGE ORGANISATIONS

Footpaths	John Heathcott	527753
Acting Scout Leader & GSL	Stephen Smith (Sos)	693107
Cub Scout Leader	Rachel Smith (Chil)	693107
Beaver Leader		
Rainbow Guider	Jackie Bailey	07871 169308
Village Hall Chair	Ben Williams	07971 608177 swindonvillagehall@gmail.com
Village Hall Booking Secretary	Jana Bridger	www.svhall.co.uk 07514 594351
Wednesday Club	Pauline Wright	693112
Play Group	(Playgroup hours)	690479
Winemakers' Secretary	Roy Harper	662861
School Headteacher	Geraint Mills	690016
Friends of the School	Caroline Williams Sarah Martin	chairfosvps@gmail.com
Art & Crafts Club	Lynne	07515 461876
Swindon Village Society	Barry Simon	521723
Mary Godwin Under 5s	(Playgroup hours)	263746
Marle Hill W.I.	Sara Jefferies	692500
Save The Countryside	Helen Wells	07770 986078

Please inform the editors of any changes to the contact details for village organisations.

Answer to the unusual paragraph on page 17:

There are no instances of the letter “e” in the paragraph, despite the fact that it is the most commonly used letter in the English language.

Deadline for the next issue of the Village News is the 16th of this month. Please send contributions to the editors via Karen Evans at 5 Manor Road or e-mail [village-news@swindonparish.org.uk](mailto:village-news@swindonparish.org.uk)

## SWINDON PARISH COUNCIL

Chairman	Cllr. Peter Allen	692933
	Cllr. Helen Wells	220875 or 07770 986078
	Cllr. Yvonne Pirso	515095
	Cllr. James Cornish	07950 196709
	Cllr. Arran Stibbe	(preferred) astibbe@glos.ac.uk 07796 248658
	Vacancy	
	Vacancy	
	Vacancy	
Clerk to the Council	Mr Shaun Cullimore	07833 089435
		parish.clerk@swindonparish.org.uk
Cheltenham Borough Councillors	Cllr. Flo Clucas	255844
	Cllr. Bernard Fisher	07523 421012
County Councillor	Cllr. Bernard Fisher	07523 421012
Allotments Manager	Ian Brown	528683

Swindon Parish and Community Website: <https://swindonparish.org.uk>

## ST. LAWRENCE'S CHURCH

Part of the North Cheltenham Team Ministry

Team Rector	Revd. Nick Bromfield	nick.bromfield@northchelt.org.uk
Team Vicar	Revd. George Davis	fr.georgedavis@hotmail.com 702890
Churchwardens		
	May Shurmer	241033
Tower Captain	Hugh Evans	241678
Organist	John Collins	511950
North Cheltenham Team Ministry Office St. Nicolas' Church, Swindon Lane, Cheltenham GL50 4PA		244373 admin@northchelt.org.uk

The office is open on Monday to Friday 9am to 12 noon. Outside these hours please leave a message on the answer phone.

The contents of this newsletter do not necessarily reflect the views of the  
Editors or the Parish Council