

Village News

in Swindon Village, Cheltenham

*Your local newsletter sponsored by the Parish
Council and delivered by volunteers.*

December 2024 Edition No.509

Upcoming Events



DECEMBER

Monday 2nd WI Meeting

7.30pm St Nicholas Church Hall

Saturday 7th Wreath Making Workshop

2pm - 5pm Village Hall. See inside

Monday 9th Parish Council Meeting

7:30pm in the Village Hall bar area

Friday 13th Carols at the Hall

7.30pm Village Hall. See inside

Sunday 15th Community Christmas Afternoon Tea

2pm - 5pm Village Hall. See inside

Thursday 19th Christmas Grotto


& Friday 20th 4pm - 7pm Village Hall. See inside

JANUARY

Wednesday 15th Swindon Village Society.

7.30pm Village Hall

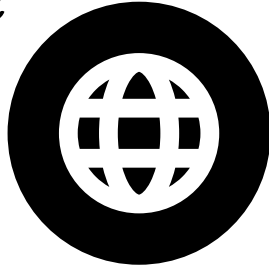
AGM followed by tea and then a half hour talk on being at the Lockerbie disaster. The AGM is members only but if the talk is of interest to you - see inside for details.



A Connected Community!



Using your phone's camera to hover over each QR Code square below for direct link access.



Parish Council Website

For full, detailed information from and about the Parish Council visit www.swindonparish.org.uk



Parish Council Facebook Page

A public page for live information and news updates from the council:
www.facebook.com/swindonparish



Swindon Village Facebook Community Group

A private group for the discussion of local issues, sharing and requesting help in the local community.



Anti-Social Behaviour

If you have any concerns about anti-social behaviour do not hesitate to contact the police.



Ring 101 (you may be charged for this phone call) or **email**
[**101@gloucestershire.police.uk**](mailto:101@gloucestershire.police.uk)

NB: Get an INCIDENT REPORT NUMBER and let the parish know about it. If the police are not made aware of the problem THERE ISN'T A PROBLEM.



A Note From The Editor

As we approach a very busy time of year, it's fair to say that I have not a clue what month it is. I'm writing my editorial for the December and January edition, but it's only November. At work, I am working on figures as far back as April 2023 and in my daydreams, thinking about holidays I might like to take next year. No wonder my poor braincell is frazzled!

We are launching our photography competition, so what better way to bring everything back to the present and get busy with your camera and smart phone. You'll have a couple of months to be creative as the deadline will be 31st January 2025. The winners will be published in the March edition and I shall shamelessly be using all of the photos in 2025 to add variety to later newsletters. More details later in this newsletter.

There's lots going on in the parish next month, so do check out the Village Hall events page. One of these is the Community Christmas Afternoon Tea Party. It is aimed at our more senior villagers. Do give it a go.

As usual, there is no Village News in January, so we'll be back in February. Wishing you all a Merry Christmas!





Swindon Parish Council

Swindon Parish and Community Website: <https://swindonparish.org.uk>

SWINDON PARISH COUNCIL REPORT

Last month Parish Councillor Tom invited people to assist with a tree planting activity. Tom had acquired a number of hedging trees. With assistance from a small team the trees have been planted in Old Mill Way. A big thank you to Tom. He will also be arranging for two larger trees to be planted in memory of Helen and David, two long serving Parish Councillors who are no longer with us.

This is budgeting time of year. The Chancellor of the Exchequer has done hers, now it is the turn of the Parish Council! I will be drafting a budget for 2025-2026 (1st April 2025 onwards). The Council members will rip it to shreds at our December meeting!

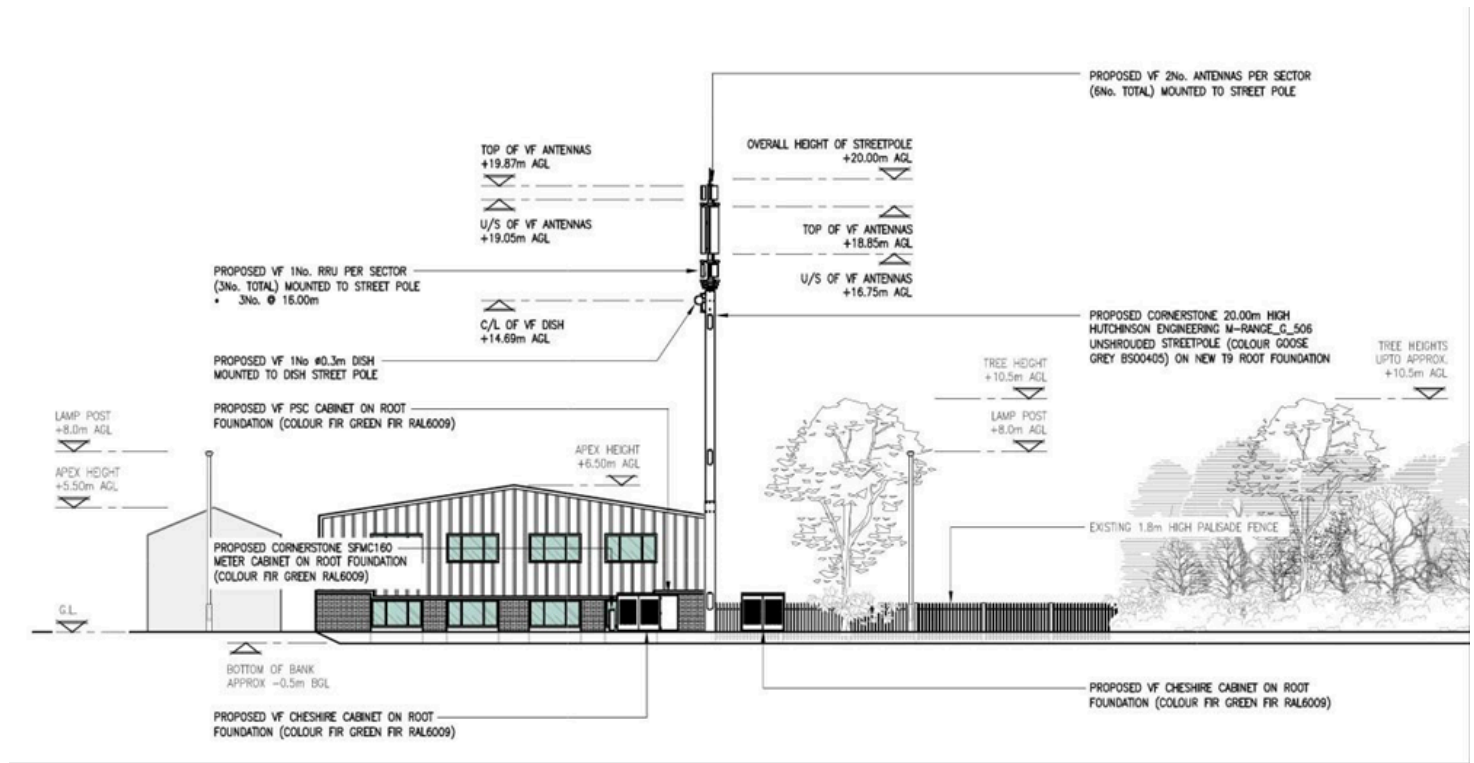
Budgeting is a little different this year as we have received Community Infrastructure Levy (CIL) funding. CIL money is funding that developers have to contribute to the area. Local authorities must spend the levy on infrastructure needed to support the development of their area, and they will decide what infrastructure is needed.

Unlike the other money we receive, CIL money is more limited in terms of how it can be used. The levy can be used to increase the capacity of existing infrastructure or to repair failing existing infrastructure, if that is necessary to support development. For example, the initial purchase of the car park was funded by a grant so the CIL money cannot be used. However, the repair to the sewer that runs beneath the car park would be a valid use of the money.

A new telecoms aerial is proposed in Wymans Lane. A previous application for an aerial at the junction of Rivelands Road and Church Road was rejected after strong local opposition. The new location is on Wymans Lane.



Swindon Parish Council



The height of the proposed aerial is 20m.

I recently met with our allotments manager. There is concern that, whilst all of our plots are rented, some are unused or being used for inappropriate purposes. We have an ever growing waiting list for an allotment, so this is unfair to those people. The tenancy agreement, which all plot holders sign, states:

“The Tenant shall cultivate the Allotment Garden for, and shall use it only for, the production of fruit, vegetables and flowers for domestic consumption by the tenant and the tenant’s family.”

As it is now winter there is not much growing but it is quite clear that many of the plots are wonderfully maintained and will be productive again in the new season. So a plea to all allotment holders. If you no longer need your allotment please let someone else have an opportunity.



Swindon Parish Council

As in previous years the Parish Council made a grant to the Poppy Appeal. Parish Council Chair Lisa was joined by other Parish Council colleagues to lay a wreath at the war memorial in St. Lawrence Churchyard on Remembrance Sunday.

The first (and maybe the last?) snow of the year has fallen.



This is a view across the fields between Swindon Lane and Hyde Lane. Clearly Christmas is approaching. My best wishes to all residents, including those who have recently joined us. Thank you to everyone who helps to enrich the community, especially all our volunteers. Our Councillors, our litter pickers, people who run the Village Hall, people who make sure the Village News hits your doormat (or browser), our Allotment Managers and others.

Be kind, stay safe and enjoy your festive season in whatever form that takes.

Shaun Cullimore
Clerk to Swindon Parish Council



Community Christmas Afternoon Tea Party

Sunday, 15 December 2024

from 2pm until 4pm at
Swindon Village Hall, Church Road,
Swindon Village, Cheltenham, GL51 9QP

We are holding a free charitable Community Christmas Afternoon Tea Party through Re-engage, formerly Contact the Elderly. The idea behind Community Christmas is so that older guests can get together to celebrate the festive season.

The afternoon will include entertainment and a free raffle.

If you are, or know of, an older person who would like to attend, then please call Ali on 07449 019830.



Merry Christmas



The Swindon Village Society

In October, John Dixon told us about boat building in Tewkesbury. The main builders were Shakespeare and Sons. Over the years they built many handsome boats for private or business use. Then in the Second World War they made fast boats for the services. Indeed, even the Americans used their boats for the war in the far-east. The name Shakespeare is not uncommon in Tewkesbury and the family is linked to the rather more famous chap of the same name in Stratford. One passageway that leaves the High Street just before the northern end will take you down to the river and past the building where the firm made their boats. Then if you go down the alley near the Abbey which takes you to the old Baptist Chapel and on to the small Baptist graveyard there are Shakespeares to be found interred there with even more direct links to the poet and playwright.

There is no meeting in December and so our thoughts have turned to next year. Work is underway to book speakers and work out where to have our occasional outings. The only things sure so far are that we will be visiting the village of Stanton in April for a guided walk and that we will have our garden party in August. We are hoping for talks on topics ranging from Hailes Abbey to Trees in all their variety and maybe a witch or two.

There is of course always the AGM in January. As ever we will try to keep this as short as possible and then take tea. Then there a rather awkward slot to fill, half an hour of chat by someone on something. The problem is that it is difficult to book an outside speaker for a mere half hour so the space tends to be filled by a member. Eileen has often taken this slot with information on some former villager of note. However, for the AGM in January, I will take on the task. Tim Brain's



The Swindon Village Society

talk on the Water Crisis of 2007 told us how well prepared the local authorities were. This caused me to remember the Lockerbie crash of 1988. I was with the first military unit to arrive there and then spent much of the next three weeks there. Lockerbie was rather more of a surprise to the world than our own water crisis and so I thought I would give my (rather hazy) recollections of a crisis for which there had been much less preparation.

The AGM is for members only. If you want to join, come along, pay your subs and you will be welcome at the AGM. If you merely want to hear the talk feel free to come along at 8pm to join us when the AGM should be over and you may even be able to scrounge a cuppa. There is no charge for attending the talk. We are not increasing subscriptions this year. They will stay at £10 for a single and £20 for a couple or family. New members will be very welcome. If you are new to the area and want to know more of what we do, send me an e-mail at barry_simon@hotmail.com.

Barry Simon



Thank You

Here's a picture of The Boneyard Bunch - the volunteers who have tamed the St Lawrence's Jungle and turned it back into a beautiful churchyard again during 2024...

Thank you to all the volunteers for their cheery efforts; great results, and for annoying Rev Jacqueline only relatively rarely!

PS. Thank you also to the lovely churchyard near-neighbour who donated delicious biscuits and to Liz & Helen for supplying hot drinks to dunk them in !

L-R: Ben, Liz, Steve, Terry, Dave, Ray, John, Malc & Helen (missing Alfie and Duncan).





Wreath making workshop

£60

**All materials are provided, refreshments
included**

Saturday, December 7th
2 pm - 5 pm

To book email:

swindonvillagehall@gmail.com



St. Lawrence's Church

RECTORY REFLECTIONS - REV JACQUELINE

I love chocolate and I can be quite discerning about my favourite brands and flavours. Turkish Delight? – No thanks! Christmas chocolate has been stocked in the supermarkets since September and there are endless glossy TV adverts to demonstrate how your festive season would be enhanced by chocolate in copious quantities. So I wondered how I might negotiate the tricky waters of chocolate Advent calendars in the Henson household.

The focus of Advent has become more of a countdown to Christmas Day when actually it is more about anticipation and waiting. Waiting is hard, particularly when we have instant access to most things, courtesy of modern technology. We all look forward to being able to celebrate with friends and loved ones and we want to count down the days with relish. Advent is a special time when it's cold and dark outside and we should not just wish it away so we can get to the 'main event' quicker. The cold and darkness can remind us that a Christian life is not just about celebrating. God promised to send us His Son to heal hurts and divisions. We have been challenged by events in the Middle East, Ukraine and across the political spectrum. Advent is a time to remember God's promise. God keeps His promises and we could use this time to reflect on how He has walked alongside us through this difficult year.

Advent is a time of quietness and austerity, meant to keep Christians from glossing over the brokenness of the world. The commercialism of Advent calendars has detracted attention from Advent as a season. The variety of luxury gifts contained in them can range from perfumes to alcohol to porcelain. In an increasingly secular world, it is difficult to retain the true meaning of Advent. So I have compromised chez



St. Lawrence's Church

Henson. I have acquiesced to the request for chocolate Advent calendars but on the understanding that they are a Fairtrade Real Advent Calendar, which tells the Christmas story with lovely illustrations. The real bonus is that a percentage of the cost is donated to a good cause.

 North Cheltenham
Team Ministry

Nativity Service at St. Lawrence

3pm

Christmas Eve



All welcome!

**Come dressed as your favourite
Nativity character!**



Christmas Tree Festival

Our Natural World

St. Lawrence's Church

Saturday 7th & Sunday 8th Decem-

Vote for your favourite tree

Cakes and miscellaneous goods for sale

Raffle for Christmas Hampers

Children's decoration making

Refreshments

Christmas songs with The Ukuladies

(Saturday only at 11.30am)

Services and events in December			
1st	Sunday	10.30am	Together @ Ten Thirty for Advent
		6.30pm	Holy Communion
3rd	Tuesday	10.30am	Chatterbox Coffee Drop-In
4th	Wednesday	10am-12noon	Church open for private prayer
7/8	Sat & Sun	11am - 5pm	Christmas Tree Festival
8th	Sunday	9.15am	Holy Communion
		6.30pm	Evensong
10th	Tuesday	10.30am	Chatterbox Coffee Drop-In
11th	Wednesday	10am - 12noon	Church open for private prayer
15th	Sunday	9.15am	Holy Communion
		6.30pm	Evensong
17th	Tuesday	10.30am	Chatterbox Coffee Drop-In
18th	Wednesday	10am - 12noon	Church open for private prayer



*May your Christmas
be filled with the joy
of Christ's birth
and your new year
blessed with his peace.*



Christmas Services at St. Lawrence

Sunday 22nd December

9:15am - Holy Communion

6pm - Candlelit Carol Service

Christmas Eve

3pm - Nativity Service

Come dressed as your favourite Nativity character!

11pm - Midnight Mass

Christmas Day

10am - Family Holy Communion

Sunday 29th December

10am - Holy Communion

Services and events in January

5th	Sunday	9.30am	All-age worship
		<i>(Please note earlier time for this month only)</i>	
		6.30pm	Holy Communion
7th	Tuesday	10.30am	Chatterbox Coffee Drop-In
8th	Wednesday	10am-12noon	Church open for private prayer
12th	Sunday	9.15am	Holy Communion
		6.30pm	Evensong
14th	Tuesday	10.30am	Chatterbox Coffee Drop-In
15th	Wednesday	10am - 12noon	Church open for private prayer
19th	Sunday	9.15am	Holy Communion
		6.30pm	Evensong
21st	Tuesday	10.30am	Chatterbox Coffee Drop-In
22nd	Wednesday	10am - 12noon	Church open for private prayer
26th	Sunday	9.15am	Holy Communion
		6.30pm	Evensong
28th	Tuesday	10.30am	Chatterbox Coffee Drop-In
29th	Wednesday	10am - 12noon	Church open for private prayer

February

2nd	Sunday	10.30am	Together @ Ten Thirty
		6.30pm	Holy Communion
4th	Tuesday	10.30am	Chatterbox Coffee Drop-In
5th	Wednesday	10am - 12noon	Church open for private prayer



St. Lawrence's Church

From the registers



Baptisms

We welcomed into the family of the church

Johhny-Jay Leyland

27th October

Burial of ashes

We commemorated the lives of

Priscilla Ann Horsell *and*

Ian Stanley Horsell

26th October

Steven James Fulwell

28th October

Maureen Sylvia Anne Davis

2nd November



St. Lawrence's Church is part of the



Enquiries about baptisms or weddings

If you would like to enquire about baptism (also called christening) or would like to book a wedding in St Lawrence's church, please contact Karen in the Team Office on **01242 244373** or **admin@northchelt.org.uk**

You can contact the Team Vicar, **Revd. Jacqueline Henson**, by email: **revjacquelinehenson@gmail.com** or by phone: **01242 220053** or via the office as above.

The Village Hall Committee and St. Lawrence's Church
invite you to a

Christmas Sing-Along
Carols and More
in the Village Hall Bar
on Friday 13th December
at 7.30pm

Bar open

Free mulled wine and mince pies



Quiz & Supper Evening

The village hall was packed to the gunnels for the church's quiz and supper evening and I think everyone there enjoyed themselves. It was a closely-fought competition and the winning team went home with 6 bottles of wine. They weren't the only winners – spot prizes for random questions between the rounds were fairly well shared out (the vicar's team won three of them!).

The raffle was well-supported and altogether the evening raised £899 for church funds.

My thanks go to everyone who supported and helped in any way – all the cooks, washer-uppers, the hall bar staff, Matthew our quiz master and, of course, all our quiz teams.

See you next year?!

Karen Evans.

St. Lawrence's Church

Chatterbox

Every Tuesday

10.30am to 12noon



Pop in for coffee/tea and biscuits
and a good old chat about
anything and everything.

Everyone's welcome, old or new. (It's free!)



Christmas Grotto

AT SWINDON VILLAGE HALL

19 & 20 DECEMBER

4-7 P.M.

£7.50 PER CHILD

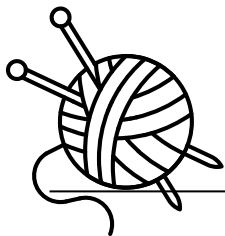
BOOK HERE:

[HTTPS://BOOKWHEN.COM/SWINDONVILLAGEHALL](https://bookwhen.com/swindonvillagehall)



**gift, & hot chocolate
included**





Marle Hill WI

We met on Monday 4 November for our Annual Meeting. Voting took place for the President and Sara Jefferies was voted on for another year.

We continue to enjoy our Book Club, Knit & Natter, walks, workshops, meals out and social events. We are busy planning our Birthday Lunch and our Christmas meal (these seem to come around at an alarming rate).

Our next meeting is on Monday 2 December 2024 at 7:30pm. Our entertainment will be the Cleeve Harmony Singers and there will be mince pies.

We meet at St Nicholas Church Hall. Do come as a visitor and you will be warmly welcomed. If you want any more information contact Sara Jefferies.

Sue Davies



Christmas Treecycling



Recycle your real Christmas tree this January.

Our reliable and friendly team of volunteers will collect your real Christmas tree directly from your front door, front garden or driveway.

Search **Sue Ryder Christmas Treecycling** to book your collection today.

**Bookings close
8th January 2025.**

We'll be collecting from 13th to 17th January 2025 from the following postcodes:

GL2 0, GL2 8, GL2 9, GL3 1, GL3 2, GL20 5, GL20 6, GL20 7, GL20 8, GL50, GL51, GL52, GL53, GL54 1, GL54 2, GL54 4, GL54 5, GL55 6 and GL56 0

With an optional donation, your Christmas tree could become the gift of expert care and support for seriously ill people and their loved ones.



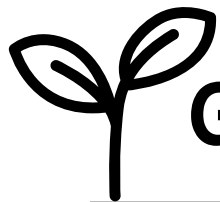
Kindly supported by:



**Because no one
should face death
or grief alone**

Sport in 2024

1. What first name was shared by the winner and runner up in the World Darts Championship on 3 Jan? What was the age of the runner up?
2. Which Italian won the Men's Australia Open Tennis championship?
3. Which horse won the Gold Cup?
4. Who kicked the winning drop goal for England at Twickenham, as they beat Ireland in the six nations in March?
5. Who won the British F1 Grand Prix in July?
6. List the top 5 countries from the Paris Olympics Medals table
7. Who was team GB's only athletics gold medallist in the Paris Olympics?
8. Who won her 19th gold medal at the Paris Paralympics?
9. Joe Root overtook who to become England's highest scoring test batsman?
10. Who beat team Ineos Britannia (Great Britain) to retain the Americas Cup, in October?
11. Ruben Amorim was appointed to replace Erik ten Hag as manager of Manchester United in November. What club did he leave to take on the role?



Go grow with Dale

Season's greetings to all you Gardeners, this year seems to have flown!

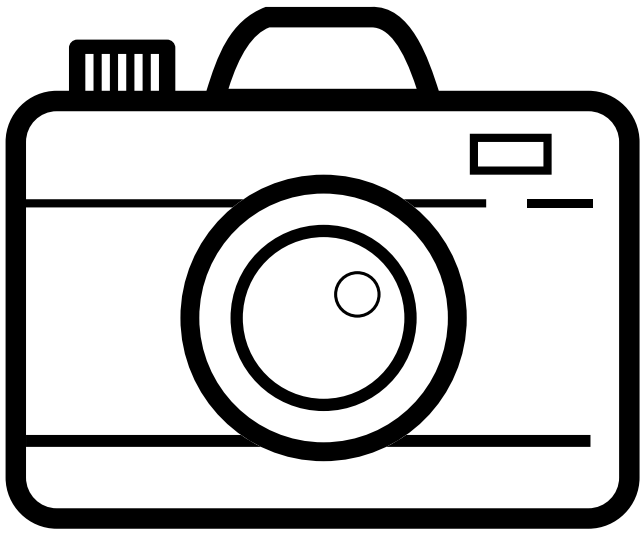
I'm busy at work in my Garden at the moment, making a base for my new Greenhouse, which I can't wait to utilise next year!

For this Christmas' edition, I thought I'd share a few tips on what you can do this month to really kickstart your next growing season.

The last two years I've done a lot of growing from seed and Winter is most definitely the best time to buy seeds, most seed companies are likely doing sales this time of year, likely on stock that has only 1 year left of shelf life/best before. But what most don't know is that if you store seeds well, i.e. in a cool, dark place, they'll likely still be usable for at least a year, if not two, after their sell by. So if you have a good idea what you want to grow from Seed in the next year or two, plan to buy soon! I'd highly recommend Chiltern Seeds, but other outlets are available.

Another probably more important task for me at the moment is rejuvenating my veg bed soil. This year I got given a 'HOTBIN' composter and it's done wonders, composting down food waste & cardboard in as little as 3-4 months! As such, Winter is the perfect time to extract your useable compost and chuck it on top of your raised beds/pots to give it all time to soak down into the soil, ready for spring. Don't feel the need to dig it in, either leave it or just a gentle soil rake will suffice and help soil health. The Winter rain will do the work for you. Doing this will give your plants a real boost come next year.

That's all for this year, thanks very much for reading once again. Merry Christmas! Dale.



PHOTOGRAPHY COMPETITION

We are holding our second photography competition.

The theme is **WINTER**, which you can interpret as you wish!

Applications are welcomed from all ages and we will have prizes in the adult and under eighteen categories.

The deadline is 31st January 2025.

Please refer to the rules at the back of this newsletter.





Swindon Village Hall

We are looking forward to a busy few weeks at the hall. One of the things that we love to do is host community events which aren't about raising money to spend on boring (but essential) things like new drainage.

Many of you will have been to one of the Easter, Halloween or Christmas events in the past. We are delighted that we will be running a Christmas Grotto again this year for the children and the Christmas afternoon tea hosted by Re-engage for our older members. Please see the posters elsewhere in this Village News.

Although we predominantly advertise on Facebook, we are getting more and more feedback that our events aren't showing until after the date. To (hopefully) counteract this, we will be putting more posters around the parish as well as having an events page in the Village News. As ever this requires a bit more work, so we would be really grateful to hear from anyone who would be able to help with this. We already have poster distributors, so it would be the designing of posters and publishing them on Social Media that would be particularly useful.

You don't need to join the committee, but obviously would be more than welcome to! Please contact Jana or Karren if you would be interested.





Swindon Village Hall - What's on

DECEMBER 2024

13th Carols at the hall. 7.30 start.

Come and join us for Carols and refreshments

15th Community Christmas Afternoon Tea 2pm

See advert in the village news

19th and 20th Christmas Grotto 4pm - 7pm

See advert in the village news

JANUARY 2025

25th 80's party. Doors open 7pm. £5 per ticket

Dancing to The Lighter Thieves. Food van available.

80's dress optional!

FUTURE EVENTS TO BE CONFIRMED:

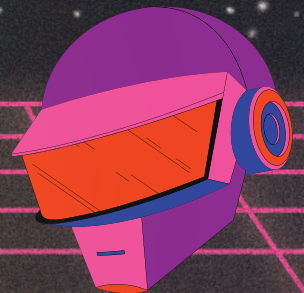
8th March Race night.

5th April Family Easter event

SWINDON VILLAGE HALL



BACK TO 80'S *Party*



**SATURDAY
25TH OF
JANUARY**

**MUSIC BY BAND
LIGHTER THIEVES**

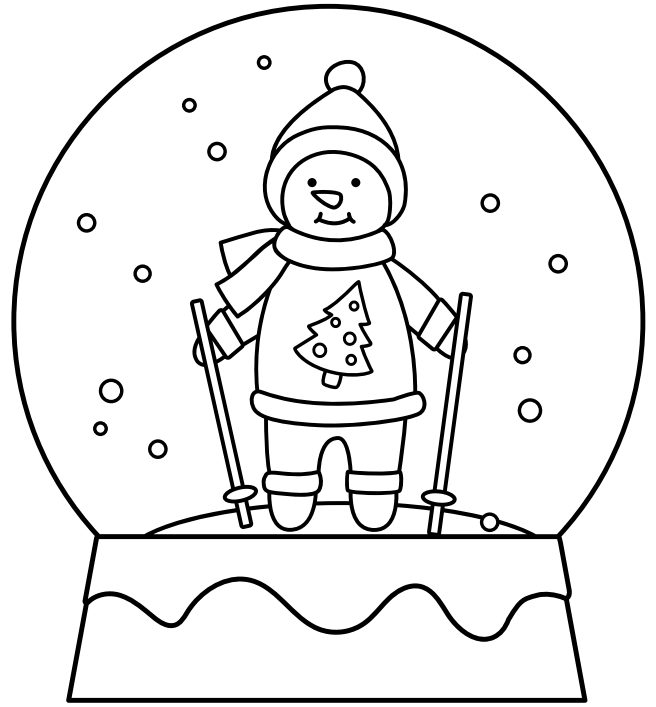
doors open at: 7pm
ticket: £5
food van on site for yummy food

TO BOOK USE LINK:
[HTTPS://BOOKWHEN.COM/SWINDONVILLAGEHALL](https://bookwhen.com/swindonvillagehall)

80'S OUTFIT OPTIONAL

Christmas Colouring





Cheltenham's waste and recycling collections

Christmas and New Year 2024–2025

These collections will take your extra Christmas waste and recycling*

Normal collection day	Revised collection day
Monday 23 December 2024	Monday 23 December 2024
Tuesday 24 December 2024	Tuesday 24 December 2024
Wednesday 25 December 2024	Wednesday 8 January 2025
Thursday 26 December 2024	Thursday 9 January 2025
Friday 27 December 2024	Friday 10 January 2025
Monday 30 December 2024	Monday 30 December 2024
Tuesday 31 December 2024	Tuesday 31 December 2024
Wednesday 1 January 2025	Thursday 2 January 2025
Thursday 2 January 2025	Friday 3 January 2025
Friday 3 January 2025	Saturday 4 January 2025

Normal collections resume Monday 6 January 2025



Garden waste collections will be suspended at the end of Friday 20 December 2024 and will resume from Monday 20 January 2025



Help us to recycle right – have a look at our top tips!



No broken glass in your recycling box please, wrap it up carefully and pop it in your refuse bin



Please put all brown paper into your blue cardboard bag



Over the festive season, remember to recycle your glass bottles, drink cans and real Christmas trees



Find out more about how to recycle your Christmas tree including drop off points at cheltenham.gov.uk/recycling-at-christmas



*Please place extra items in plastic bags next to your bins at the kerbside, ensuring your recycling is sorted in the normal way



01242 262626



cheltenham.gov.uk/recycling



Cheltenham recycles



CHELTEMHAM
BOROUGH COUNCIL



P. White. Dip SAC FHP, RGN, BSc (Hons)

**Qualified and insured. Providing a mobile clinic
to people at home**

- Ingrown toenails
- Athlete's foot
- Corns and calluses
- Diabetic foot care
- Verruca
- Cutting and filing toenails and thickened toenails

Clinic appointments at Springbank Resource Centre
Springbank Way, Cheltenham, Gloucestershire, GL51 0LG.
Easy access building, free parking

For cutting and filing toenails

Contact Pushpa on 07873575560 or 01242 250691
Website: pwfootcare.co.uk

SDC ROOFING

ALL ASPECTS OF ROOFING WORK UNDERTAKEN

- **New Roofs**
- **Reroofs**
- **Flat Roofs**
- **Repointing**
- **New Felt
and Battens**
- **Rebedding**
- **Repairs**
- **Chimney Repairs**

**Free Quotations
and Advice**



Quality UPVC Roofline Products

- **Fascias** • **Soffits**
- **Cladding**
- **Guttering**
- **Downpipes**



- **Dry Verges**
- **Dry Ridges**
- **Eaves Protection
Systems (EPS)**
- **Roofs Cleaned**
- **Guttering Cleared,
Cleaned and
Repaired**

**All major debit and
credit cards
accepted**

DIRECT 07300 642 651
EMAIL: **sdcroofing@yahoo.com**

FREEPHONE 0800 955 5063

WITTAS HOUSE • TWO RIVERS • STATION LANE • WITNEY • OX28 4BH

Photography Competition Rules

The competition is free to enter and is open to all ages. Entries are limited to two per person.

The entries will be split into two categories – under and over eighteen.

There will be two prizes per age group, providing there are sufficient entries in each. Prizes will be given in the form of vouchers.

Entrants must be residents of Swindon Parish and provide their name and address (and age if entering the under 18 section).

Photos can be taken on any device and should be emailed to village-news@swindonparish.org.uk. We will acknowledge receipt, and entrants should ensure that they receive this.

The photos will be judged blind by independent persons and their decisions are final.

Winners will be notified in February and their entries published in the March newsletter and on the Parish web site.

Submission of a photograph is taken as acceptance of these rules.

Answers to quiz:

- | | |
|---|---------------------|
| 1. Luke Humphries and Luke Littler, sixteen | 7. Keely Hodgkinson |
| 2. Jannik Sinner | 8. Sarah Storey |
| 3. Galopin des Champs | 9. Alastair Cook |
| 4. Marcus Smith | 10. New Zealand |
| 5. Lewis Hamilton | 11. Sporting Lisbon |
| 6. USA, China, Japan, Australia, France | |

SWINDON PARISH COMMUNITY ORGANISATIONS

Footpaths	John Heathcott	527753
Scouts, Cubs, Beavers		info@ 1sv-scouts.co.uk
Rainbow Guider	Hannah Butler	07464 784155
Village Hall Chair	Jana Bridger	07913 911930 swindonvillagehall@gmail.com
Village Hall Bookings	Jana Bridger	swindonvillagehall@gmail.com
Village News Distribution	Hugh Evans	241678
Play Group	(Playgroup hours) For Sept 24 admission	690479 07949 352507
School Headteacher	Geraint Mills	690016
Friends of the School		chairfosvps@gmail.com
Art & Crafts Club	Lynne Mumford	07515 461876
Swindon Village Society	Barry Simon	521723
Mary Godwin Under 5s	(Playgroup hours)	mgu5@hotmail.co.uk
Marle Hill W.L.	Sara Jefferies	07477894639 / 692500

Please inform the editors of any changes to the contact details for village organisations.

Deadline for the next issue of the Village News is the 16th January 2025

Please send contributions to the editors via Karren Parsons
at 29 Dark Lane or e-mail village-news@swindonparish.org.uk

SWINDON PARISH COUNCIL

Cllr. Lisa Whitaker (Chair)	07715 470842
Cllr. James Cornish	07950 196709
Cllr. Sharon Collicutt	07884 184423
Cllr. Natalie Blankley	07725 948935
Cllr. Alison Berry	07754 006634
Cllr. Lynne Allen	07979 890134
Cllr. Tom Harcourt	07963 581371

There are currently TWO vacancies. Please get in touch if you would be interested in joining

Mr Shaun Cullimore (Clerk to the Council)	07833 089435 parish.clerk@swindonparish.org.uk
---	---

Cheltenham Borough Councillors

Springbank Ward (south of Tewkesbury Road)

Cllr. Peter Jeffries	07717 493686
Cllr. Suzanne Williams	01242 230648

Swindon Village Ward (north of Tewkesbury Road)

Cllr. Flo Clucas	01242 255844
Cllr. Frank Allen	07402 011272

County Councillor

Cllr. Bernard Fisher	07523 421012
----------------------------	--------------

ST.LAWRENCE'S CHURCH

Part of the North Cheltenham Team Ministry

Team Vicar: Revd. Jacqueline Henson revjacquelinehenson@gmail.com
220053

Churchwarden: Hugh Evans,241678

Tower Captain: Hugh Evans,241678

Organist: John Collins511950

North Cheltenham Team Ministry Office 244373

admin@northchelt.org.uk

The office is open on Tuesday, Wednesday and Thursday from 9.00am to 1.30pm, and on Friday from 1.30pm to 4.00pm.

Outside these hours please leave a message on the answer-phone.

The contents of this newsletter do not necessarily reflect the views of the Editors or the Parish Council.